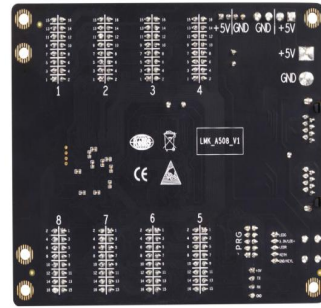




Front View



Rear View

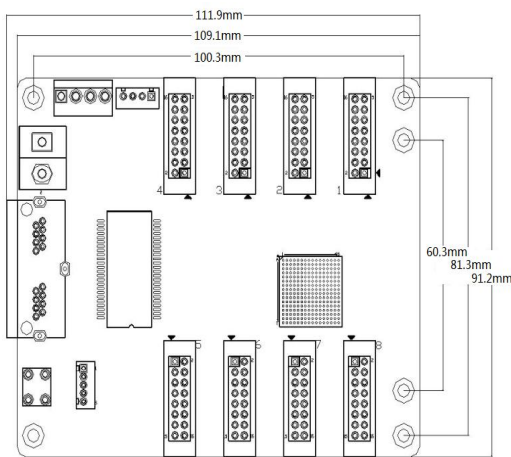
Key Features

- 16 sets of RGB parallel data output, up to 128×512 pixels
- Each LAN port support width up to 3840, height up to 2900
- Support receiver parameters and firmware readback
- Prestore two sets of receiver parameters
- Support image of different screens connection fastly
- Data calibration, dual backup and restore
- Support receiver configuration file backup
- Dual ethernet hot backup
- Ethernet error code detection
- 3D function

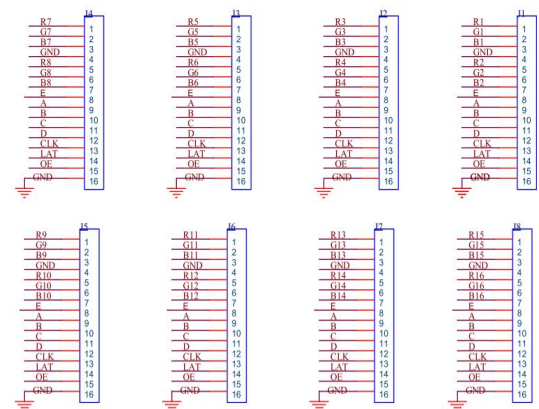
Specification

Performance	Load Capacity	128×512
Power	Input Voltage	DC 3.6~5.0V/0.5A
	Max Power	2.5W
Environment	Temperature	-25℃~100℃
	Humidity	0%~65%
Physical	Weight	0.1kg
	Dimension	111.9mm×91.2mm×19.1mm

Dimension



Pin Definition Diagram



Order Codes

Product Code	Item
850-0008-01-0	SubitoNX E08

