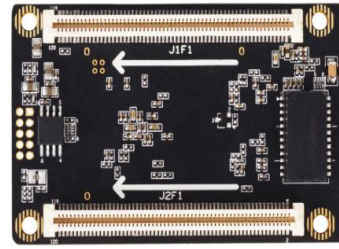


Front View



Rear View

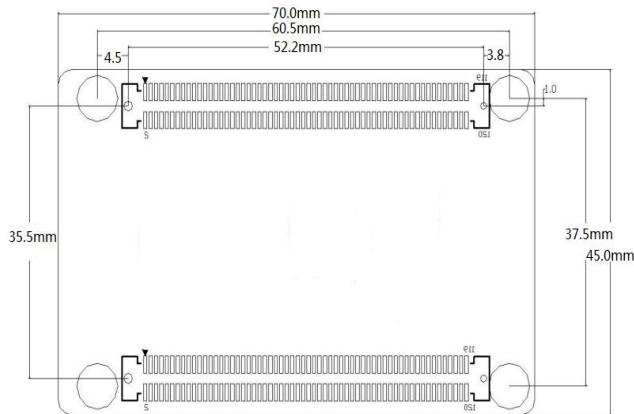
**Key Features**

- 32 sets of RGB parallel data output, up to 128×1024 pixels
- Each LAN port support width up to 3840, height up to 2900
- Support receiver configuration parameter dual backup and readback
- Data calibration, dual backup and restore
- Restore multi-receivers parameters
- Support image of different screens connection fastly
- Brightness and chroma calibration point by point
- Dual ethernet hot backup
- Ethernet error code detection
- Monitor involtage and temperature
- FLASH(supported by intellectual module)
- Support LCD module to show monitor information

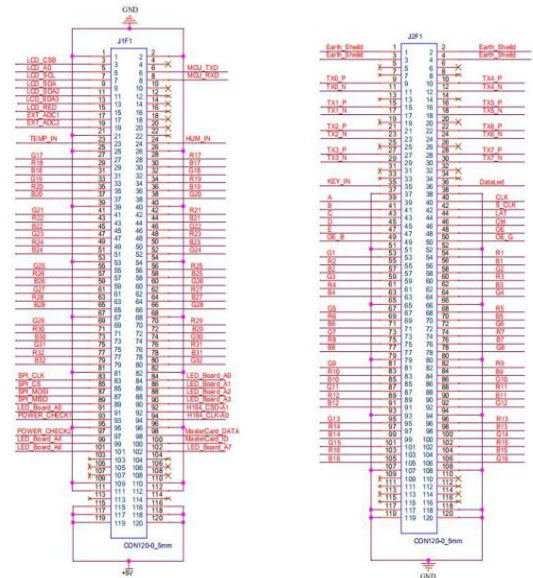
**Specification**

Performance	Load Capacity	512×256
	Data Set	Parallel 32 sets Serial 64 sets, up to 96 sets
Power	Input Voltage	DC 3.6~5.5V/0.6A
	Max Power	3.0W
Environment	Temperature	-20℃~70℃
	Humidity	0%~65%
Physical	Weight	0.017kg
	Dimension	70mm×45mm×7.3mm

**Dimension**



**Pin Definition Diagram**



**Order Codes**

Product Code	Item
850-0001-01-0	SubitoNX L01

Tel: +86-592-5771197 | Fax: +86-592-5788216 | E-mail: sales@rgblink.com  
 Headquarter: S601 Weiye Building, Torch Hi-Tech Development Zone, Xiamen, Fujian, P.R.C.

Specifications are correct at time of printing and subject to change or alteration without notice.

