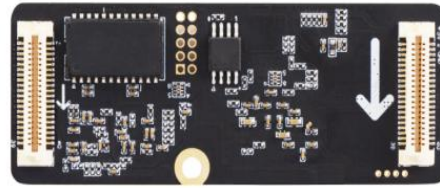


Front View



Rear View

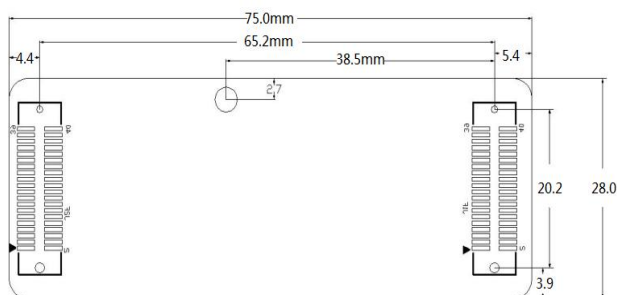
### Key Features

- 8 sets of RGB parallel data output, up to 128x256 pixels
- Each LAN port support width up to 3840, height up to 2900
- Support receiver configuration parameter dual backup and readback
- Data calibration, dual backup and restore
- Pre-store multi-receivers parameters
- Support image of different screens connection fastly
- Brightness and chroma calibration point by point
- Dual ethernet hot backup
- Ethernet error code detection
- Monitor involtage and temperature
- FLASH (supported by intellectual module)
- Support LCD module to show monitor information

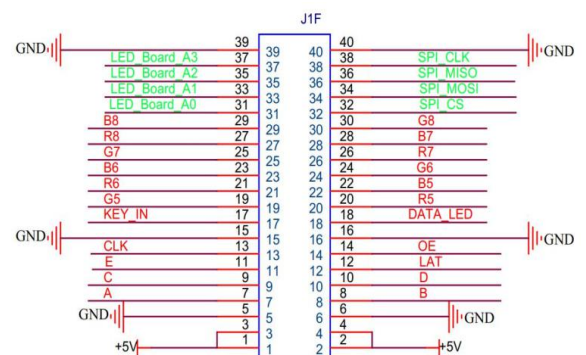
### Specification

<b>Performance</b>	load Capacity	128x256
	Data Set	Parallel 8 sets Serial 32 sets, up to 36 sets
<b>Power</b>	Input voltage	DC 3.6~5.5V/0.6A
	Max Power	2.5W
<b>Environment</b>	Temperature	-20°C ~ 70°C
	Humidity	0%~65%
<b>Physical</b>	Weight	0.017kg
	Dimension	70mmx45mmx8.5mm

### Dimension



### Pin Definition Diagram



### Order Codes

Product Code	Item
850-0003-01-0	SubitoNX L03

Tel: +86-592-5771197 | Fax: +86-592-5788216 | E-mail: sales@rgblink.com  
 Headquarter: S601 Weiye Building, Torch Hi-Tech Development Zone, Xiamen, Fujian, P.R.C.

Specifications are correct at time of printing and subject to change or alteration without notice.

