

D6 Quick Start



- Internal 4:4:4 processing
- HDR compliance
- HDMI 2.0 / DP 1.2/ HDMI 1.4/ Dual Link DVI inputs compatible
- 12G/6G/3G/HD/SD SDI inputs compatible
- HDMI 2.0 output
- 12G/6G/3G/HD/SD SDI outputs
- EDID management up to 4K
- Multiple working mode
- Presentation Switching with 4K background + 8 layers
- AUX outputs
- PVW with all the inputs multiviewer and PST
- Demountable front panel for remote control
- Genlock for both inputs and outputs

CONTENTS

Product Introduction.....	2
Packing Configuration.....	3
Hardware Orientation.....	4
Front Panel.....	4
Menu Structure.....	4
Back Panel.....	7
XPOSE Operation.....	8
XPOSE Installation.....	8
XPOSE Operation.....	10
Login in XPOSE.....	10
Web Links.....	12
Connect with the D6.....	12
Output Settings.....	15
Operation Mode.....	18
Preview Mode (4K2K).....	18
Split Mode.....	24
Presentation Mode (4K2K).....	26
Presentation Mode(4K1K).....	29
Presentation Mode (8K1K).....	31
System Settings.....	40
Contact Information.....	44

Product Introduction

D6 is a 4K2K@60Hz scaler & presentation switcher, supports any format 4K2K signal input and output switching, D6 is based on fully optional input/output modules structure, with different optional modules to build the different range application.

D6 can be set up with the local front panel or by remote controller with its remote control interfaces, including Ethernet, USB and RS 232.

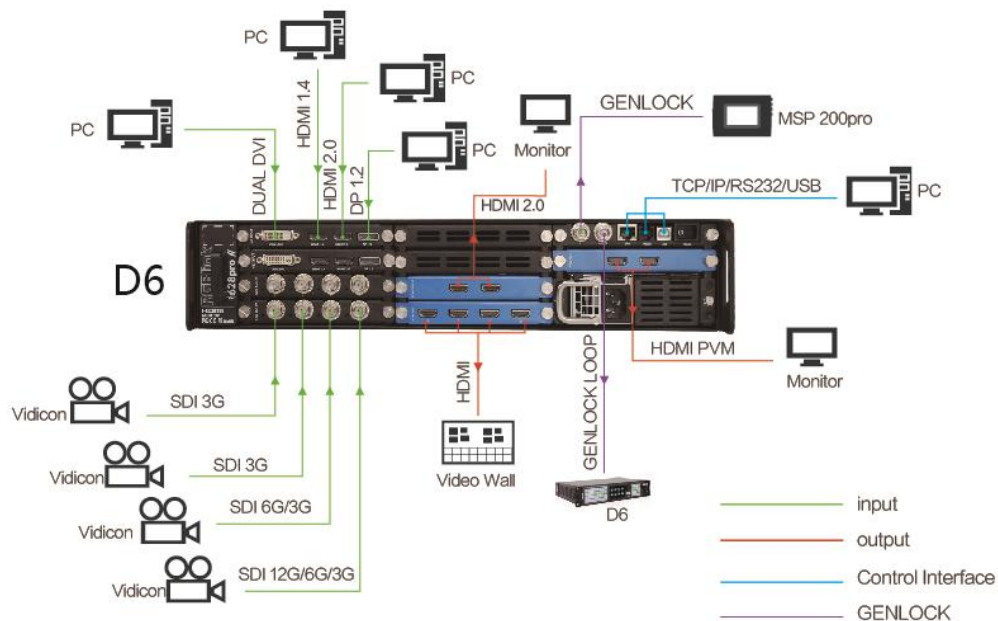
D6 local front panel is not only a dedicated normal local panel, but a removable remote control panel. Operator can control the D6 by setting up this remote control panel with a Cat5 cable only. The remote control panel is used to preview the input sources and PST by its LCD display directly.

For the, remote controller, it is including the XPOSE runs on the desktop windows and MAC OS, and the T1 or the 3rd party CMS, such as crestron and AMS.

With the set up and operation, D6 can be set to meet different application, by its different working mode, including 4k Preview Switcher mode, Split mode and different presentation mode.

System Connection Diagram

This is the typical diagram for switcher and presentation application with multiple 4K/2K connection.



D6 System Connection Diagram



Packing Configuration

AC Power Cord



HDMI Cable



HDMI to DVI Cable



SDI Cable



DVI Cable



USB Cable



DB9 to RJ11 Cable



Screw Driver

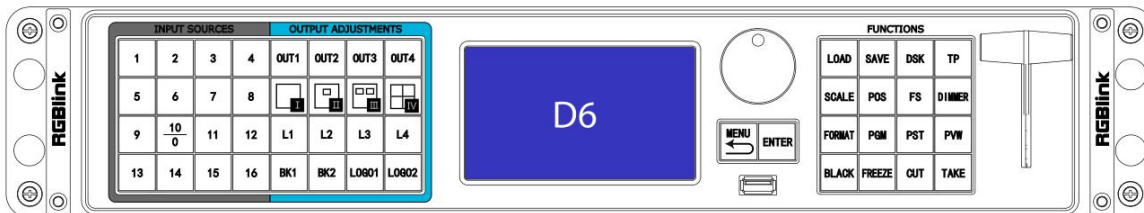


Note:

AC Power Cable supplied as standard according to destination market.

Hardware Orientation

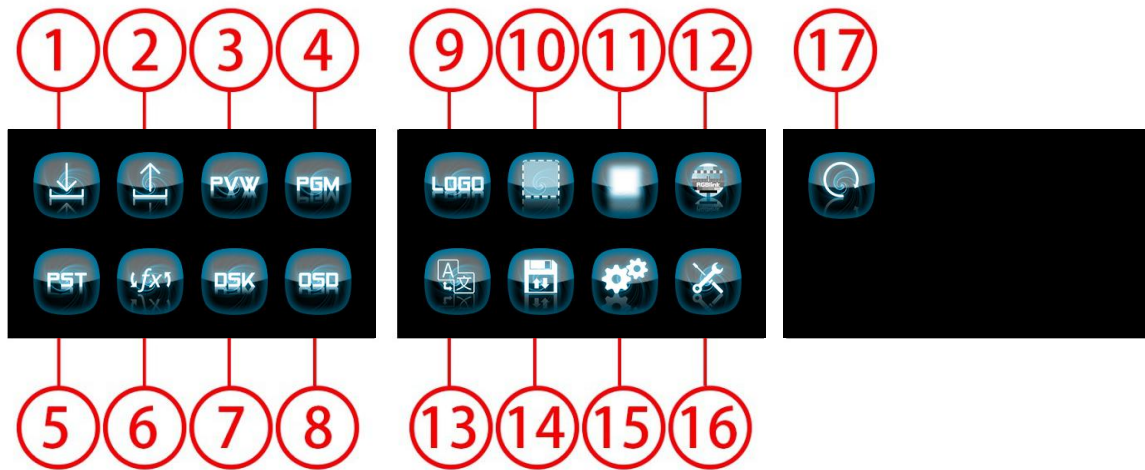
Front Panel



Button Instruction			
1~16	Input signal source button and Number button use for scale, crop, zoom and custom setting	TP	Test pattern button
OUT1~OUT4	Main Output button	SCALE	Scale button
	Multiview presets area	POS	Adjust
L1~L4	Layer Area	FS	Layer Mask
BG1&BG2	Background button	DIMMER	Dimmer button
LOGO1 & LOGO2	Logo button	FORMAT	Choose Resolution or custom Setting
LCD Panel	Show operation menu items	PGM	Program button
Knob	Confirm and adjust OLED menu	PST	PST button
MENU	Menu and back button	PVW	Source Monitoring
ENTER	Confirmation button	BLACK	Black out button
USB Connector	USB Connector	FREEZE	Freeze Current Image
LOAD	Save the set up as the preset	CUT	Direct switch from PST to PGM without any transition effects
SAVE	Loading the user preset	TAKE	Switch from PST to PGM with transition effect
DSK	Down streaming key	T-Bar	Switch from PST to PGM with transition effects at any position

Menu Structure





Menu Instruction			
1	Input	10	Background
2	Output	11	Blending
3	PVW	12	Test Pattern
4	PGM	13	Language
5	PST	14	View, including Save & Load Menu
6	Layer Mask	15	System
7	DSK	16	Tech Support
8	OSD	17	Factory Reset
9	LOGO		

Input
Info
Adjustment

Output
2K/FHD
4K/UHD
Output Module 1
Output Module 2
Output Module 3
Output Module 4

P/W
CH.1
Format
CH.2
Format
CH.3
Format
CH.4
Format
CH.5
Format
CH.6
Format
CH.7
Format
CH.8
Format

PGM
Layer 1 In
Format
Scale
Layer 2 In
Format
Scale
Layer 3 In
Format
Scale
Layer 4 In
Format
Scale
Layer 5 In
Format
Scale
Layer 6 In
Format
Scale
Layer 7 In
Format
Scale
Layer 8 In
Format
Scale

PST
Layer 1 In
Format
Scale
Layer 2 In
Format
Scale
Layer 3 In
Format
Scale
Layer 4 In
Format
Scale
Layer 5 In
Format
Scale
Layer 6 In
Format
Scale
Layer 7 In
Format
Scale
Layer 8 In
Format
Scale

FX
Effects
Time
Auto Take

DSK
Preset
Mode
Alpha
Red Min
Red Max
Green Min
Green Max
Blue Min
Blue Max
Text Overlay

LOGO
LOGO
LOGO Source
On/Off
H POS
V POS
Delet Logo
Still
Still Source
On/Off
H POS
V POS
Delete Still

Background
BG Layer 1
BG Layer 2
BG Layer 3
BG Layer 4

Blending
Blending
Blending Width
On/Off

Test Pattern
Type
Red
Green
Blue

Language
Language/语言

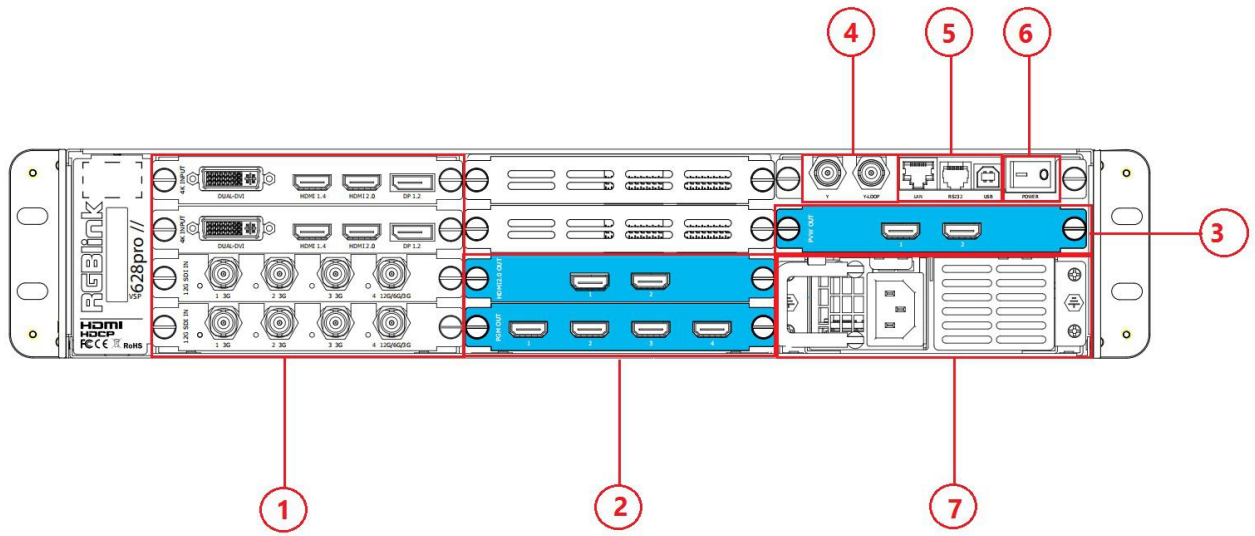
Preset
Load
Save

System
System Mode
Ethernet
Lock Front Panel
Button Color
T-Bar Calibration
Fan Speed
Key Board Test

Tech Support
Version
Series Number
Email
Website
Whatsapp
Skype

Factory
Yes <ENTER>, No<MENU>

Back Panel



Chassis Module Structure			
1	4 input module slots, support SDI & 4K Input module	4	Genlock Y In /Loop
2	2 output module slots, support HDMI and SDI optional modules	5	Communication connectors including:1 LAN port, 1 RS232 and 1 USB-B
3	Dedicated slot for PVW module consisting of 2 HDMI outputs	6	Power switch
7	Power module		

XPOSE Operation

XPOSE Installation

Environment Requirements:

Processor: 1 GHz or above 32 bit or 64 bit processor

Memory: 2 GB or more


Graphics: Support DirectX 9 128M or above (open AERO effect)

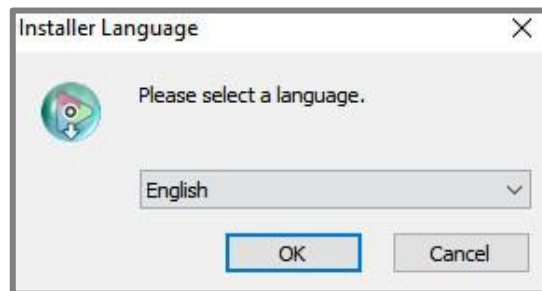
Hard disk space: Above 16G (primary partitions, NTFS format)

Monitor: Resolution must be 1280 x720 pixel or above (it can not display normally if the resolution is lower than 1280 x720)

Operating system: Windows 7 or above (full version, not Ghost version or compact version)



Double click  icon, it will pop-up the Installer Language box, select the language, for example, select “English”, and click “OK” to confirm.

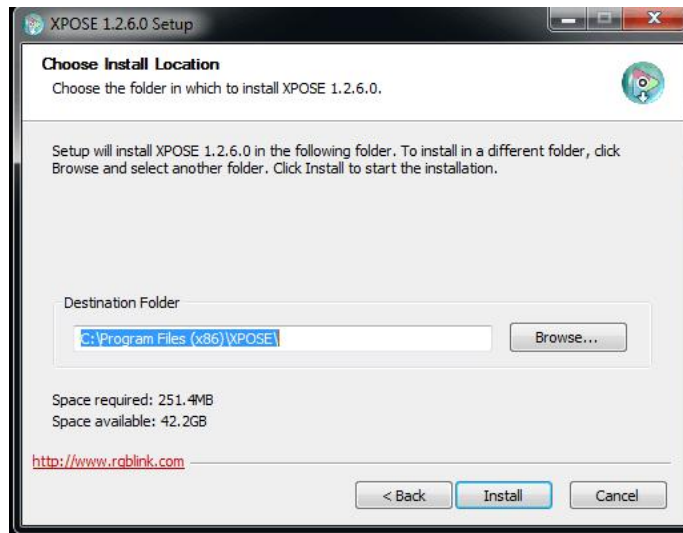


Click “Next” to install:



Select “Browse...” to select the XPOSE software install location:

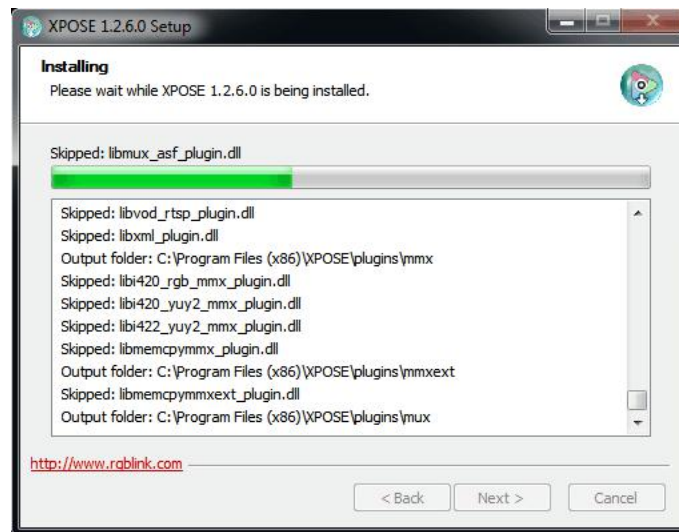




Note

User should get the rights in “Roles Management” when install the XPOSE to disk C if the system is Windows 7 or above.

Click “Install”:




Click “Finish” and is ready to run the XPOSE management software:



XPOSE Operation

Login in XPOSE



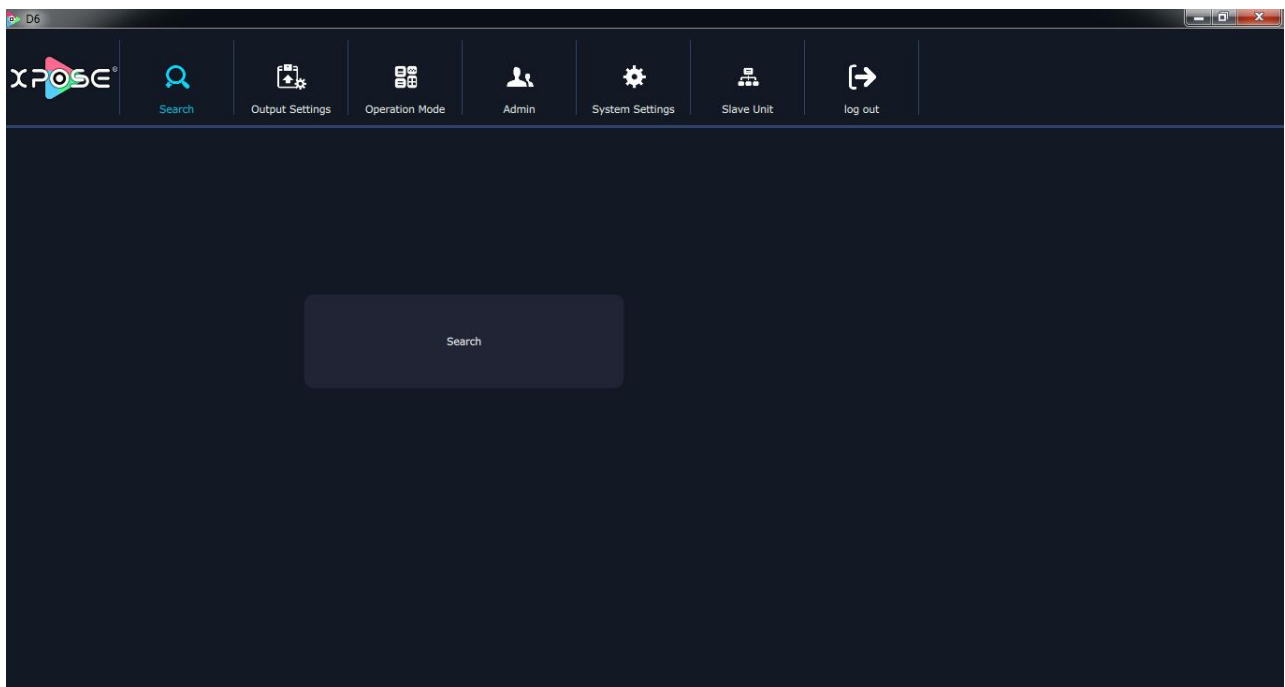
Double click the icon  on the desktop. Log in interface will be enter after opening, the user name is Admin, and there is no password, select "D6", and enter into the software by clicking "Login".





If user want to change the language to Chinese, click the drop down arrow after “Language” and select “Chinese”, as shown in the figure below, then click “Login” to enter into the XPOSE.


XPOSE management software interface is shown as follows.

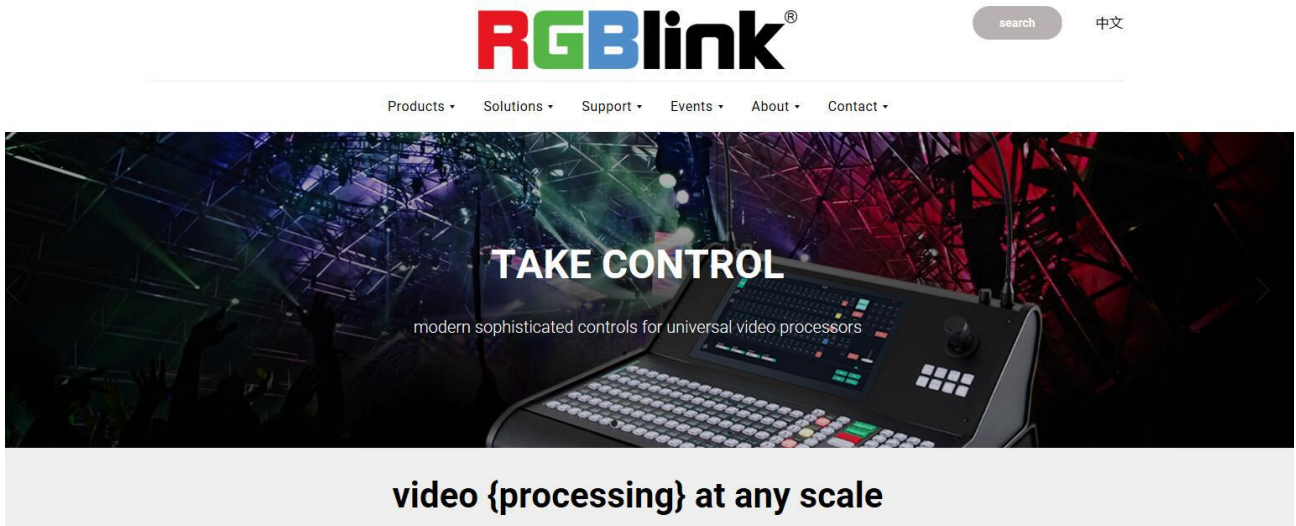


XPOSE management software contains the functions including: Web Links, Search, Output Settings, Operation Mode, Admin and System Settings. In the following parts, we will introduce these in detail.



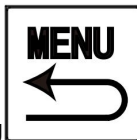
Web Links

XPOSE management software sets up the web links. Click the web links icon  on the top left corner, and enter the RGBLink's website, as shown in the picture below:

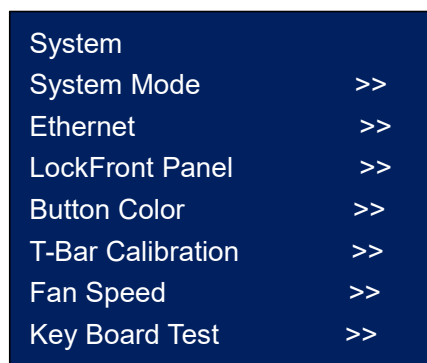


Connect with the D6

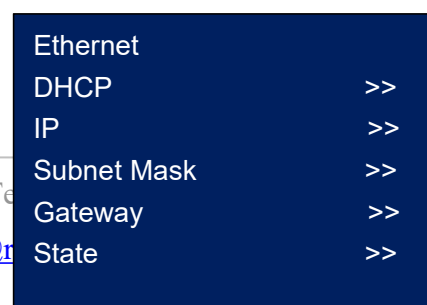
Firstly, set up the D6 IP, and make sure the IP of the computer and the D6 are on the same network range. Here is the way of how to check the device IP.



Press MENU and rotate knob to select System, then enter the sub-menu as follows:



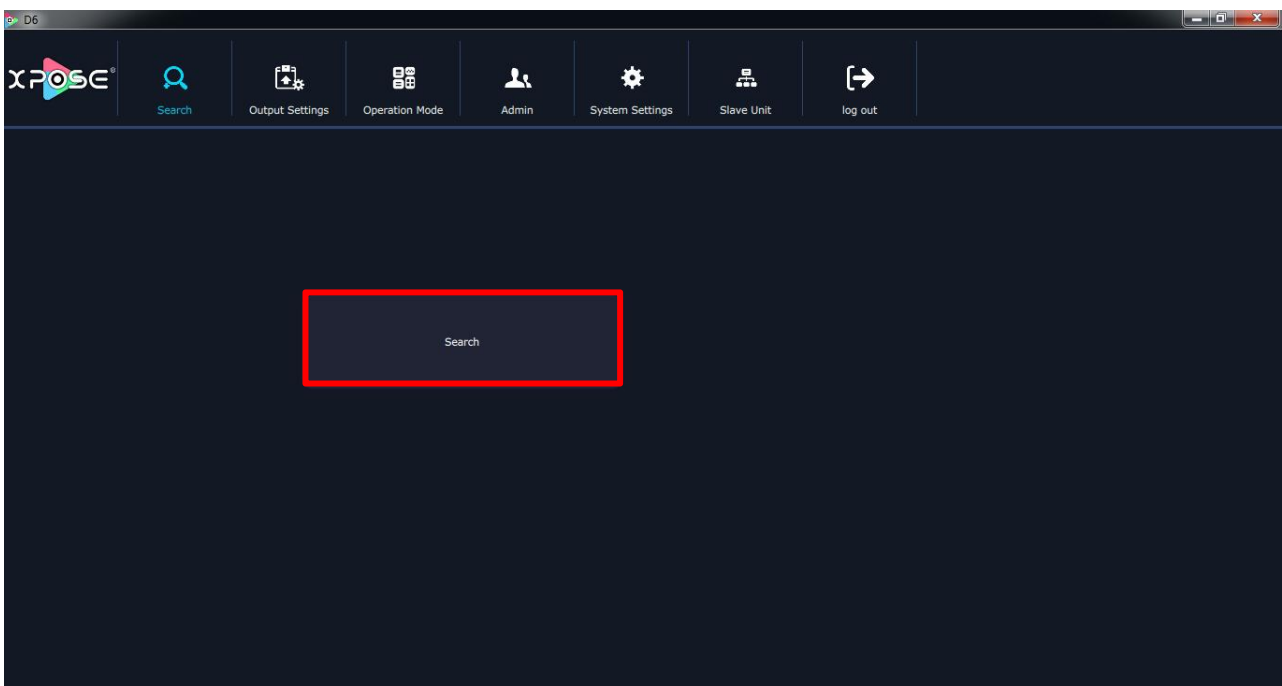
Select Ethernet and enter its sub-menu, then select IP



and IP of the device will be found.

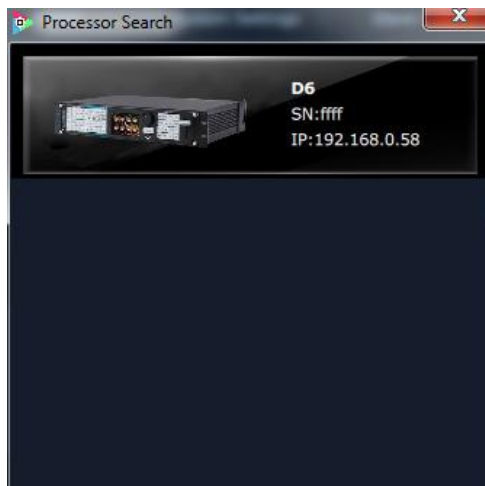
Connect the PC which XPOSE runs on the PC with the CAT5 cable or USB cable as I n the Box to the D6. Power on D6 and ready to make the remote set up and configuration.

Then, click the shortcut “Search” on the operation interface.

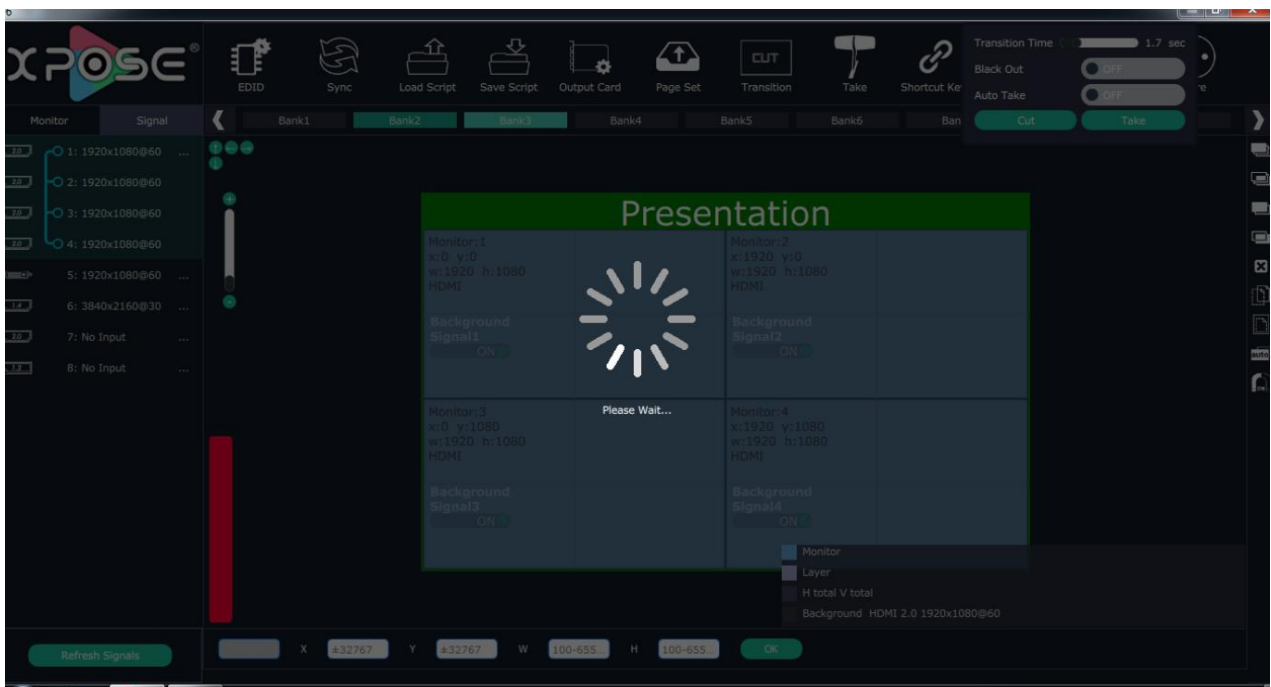


Then it will search the D6,

and show the D6 info, including the serial number and IP address, shown as the picture here:



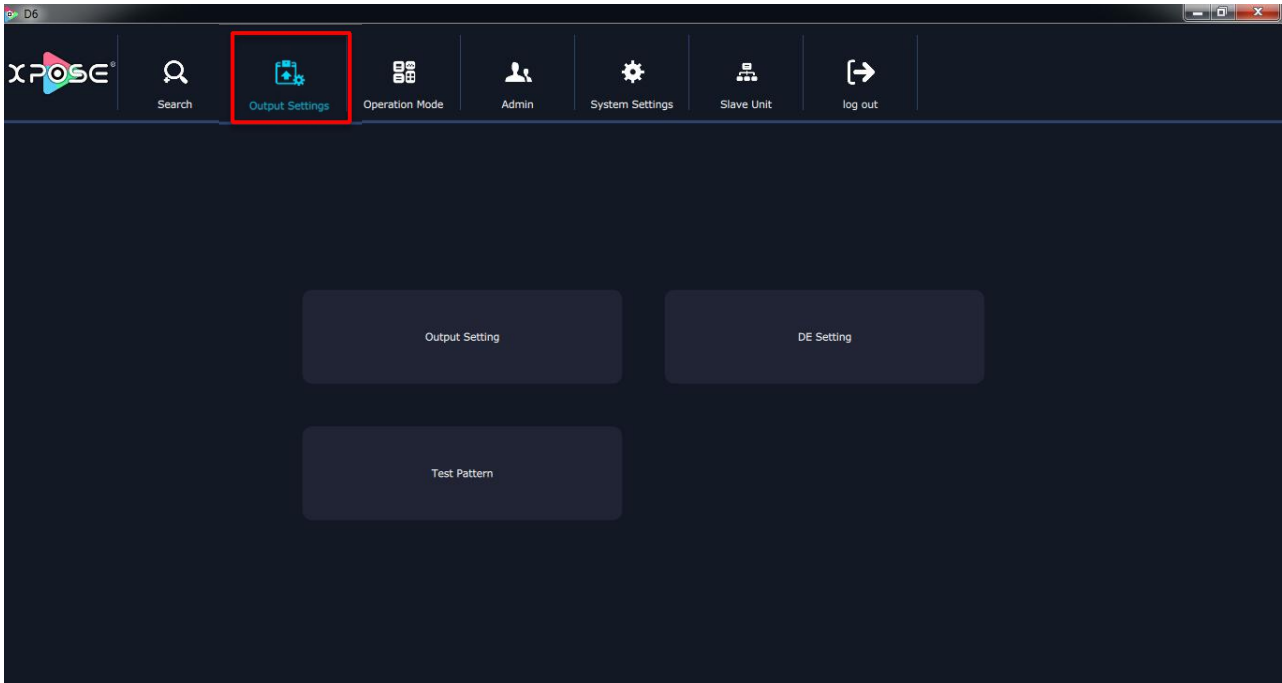
Finally, click the D6 and goes to its working mode page:



The D6 will automatically synchronize after connection, as shown in the figure below:

Output Settings

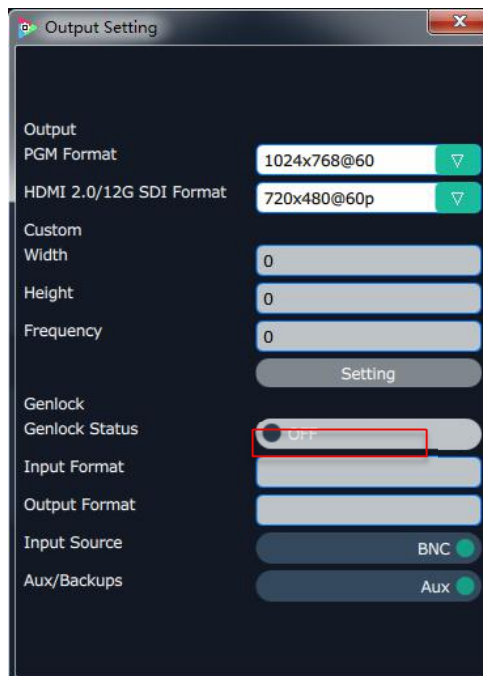
Click the “Output Settings”, and enter to the interface as follows:



Output Setting, DE Setting, Test pattern are included in output settings, specific as follows:

Output Setting

Click the “Output Setting”, and pop-up window as follows:



Output: Click the drop down arrows after the formats, and select the output resolution in the pull-down menus according to actual needs.

Format: The width, height and frequency can be set if select “Custom” in “PGM Format”. Click “Setting” to confirm.

Genlock: Enable or disable the genlock function by sliding the genlock switch. If select “ON”, the output resolution will be same with the resolution that selected. HDMI or BNC can be selected in “Input Source” by sliding the switch.

Aux/Backups: Enable or disable the Aux/Backups function by sliding the Aux/Backups switch. If users select “ON”, with four AUX outputs enable to show four individual layers; enable the splitting in horizontal with four AUX outputs, also show a whole image; and enable the splitting in horizontal with 2 AUX outputs, and show PIP.

Note

Content on AUX is set only need once, all operation modes are the same AUX signal.

DE Setting

Click the “DE Setting”, and pop-up window as follows:



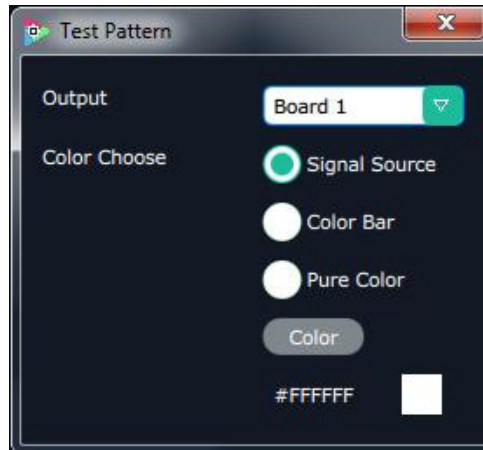
Brightness: The brightness adjustment range is between 0~128. Click “Set” to confirm.



De: User can select one port or all ports, and enable the De function by sliding the De Switch. The settings for De include X, Y, width, height, line polarity and scene polarity. Vertical splitting can be selected in "Output Port".

Test Pattern

Click the "Test Pattern", and pop-up window as follows:



Output: User can select any board among the four boards.

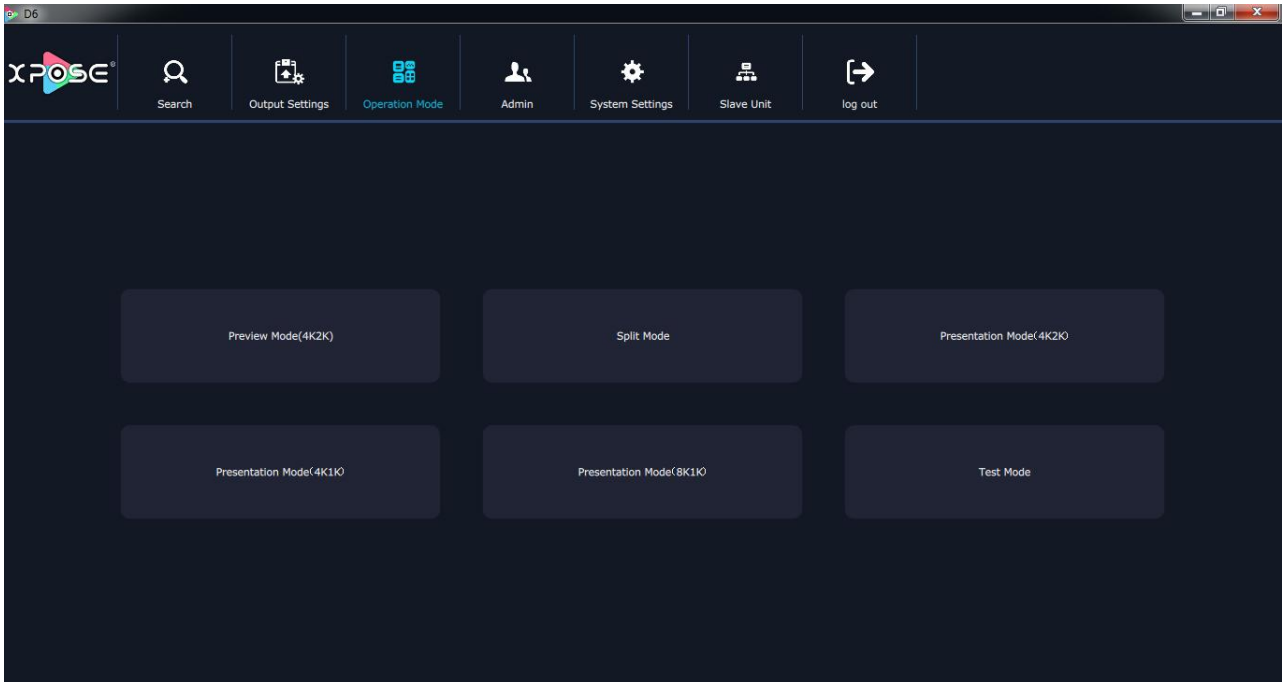
Color Choice: TP, color bar and pure color can be selected.

Color: If select "Pure Color", red, green and blue can be adjusted, the adjustment range is between 0~255.

Operation Mode

Click the “Operation Mode”, and enter to the interface as follows:

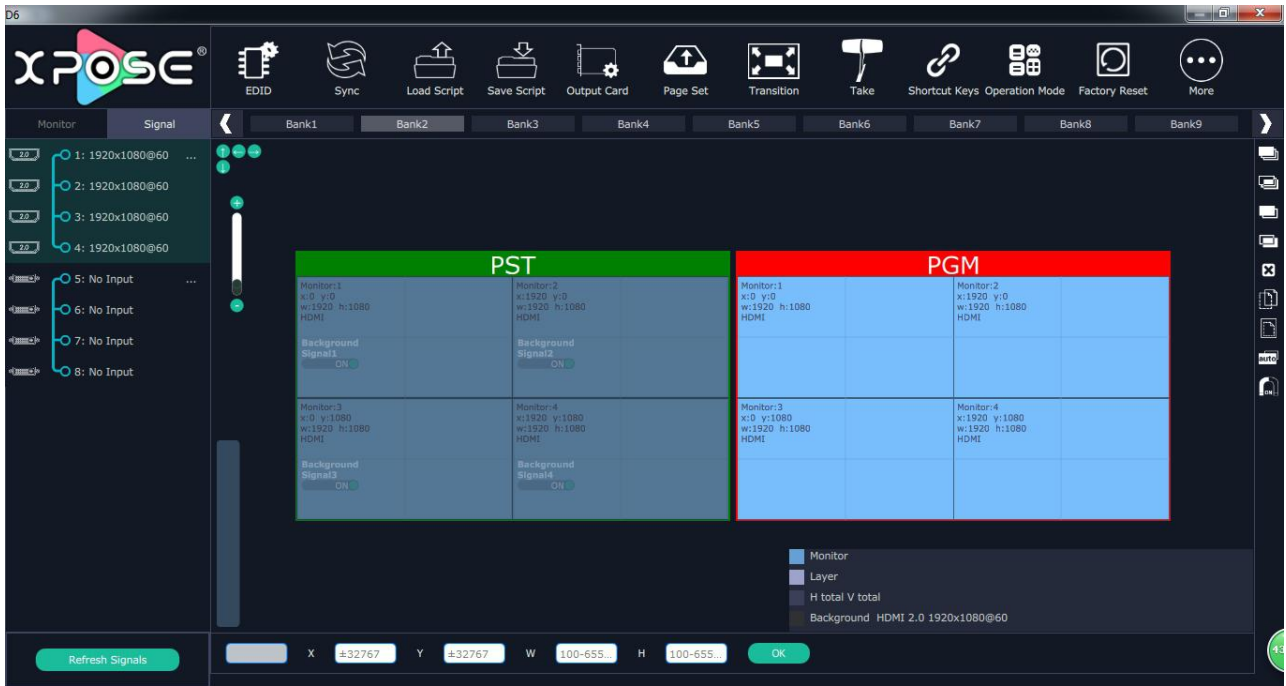
Preview Mode (4K2K), Split Mode, Presentation Mode(4K2K), Presentation Mode(4K1K), and Presentation Mode (8K1K) are included in operation mode, specific as follows:



Preview Mode (4K2K)

Click the “Preview Mode (4K2K)”, and enter to the interface as follows:





Signal List

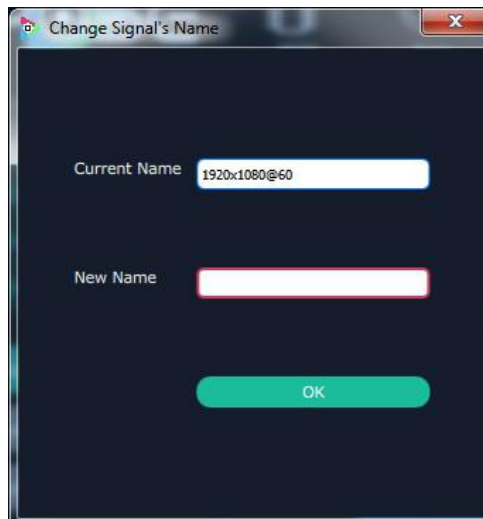
The signal list is shown as follows:



It displays the input module type, the quantity of inputs and input format. Right click the input for the following settings:

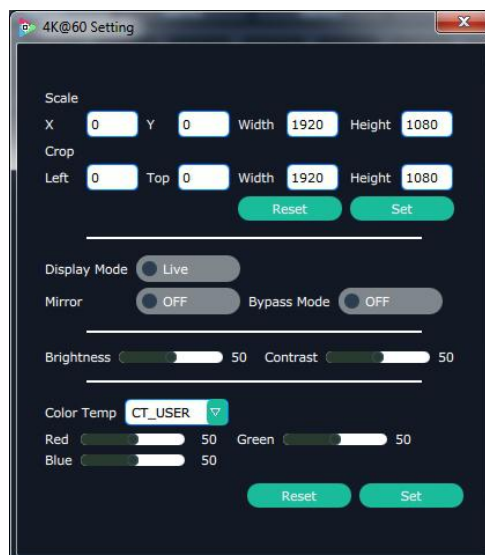


Change Name: Select “New Name”, and input the new name, click “OK” after setting.



Refresh Signals: Right click the input and select “Refresh Signals”. If there is signal, it will show the input format, or it will show “No Input”.

Set Input Property: Right click the input and select “Input Property”, it will enter to the interface as follows:



Scale: Set the X, Y, width and height.

Crop: Crop the left, top, width and height.

Display Mode: Select “Live” or “Freeze”.

Mirror: Enable or disable the mirror function, default “OFF”.

Bypass Mode: Enable or disable the bypass mode. When select “ON”, the output format will be the same with the input format.

Brightness: Set the brightness, the adjustment range is 0~100.

Contrast: Set the contrast, the adjustment range is 0~100.

Color Term: Set the color temp (red, green and blue), the adjustment range is 0~100.

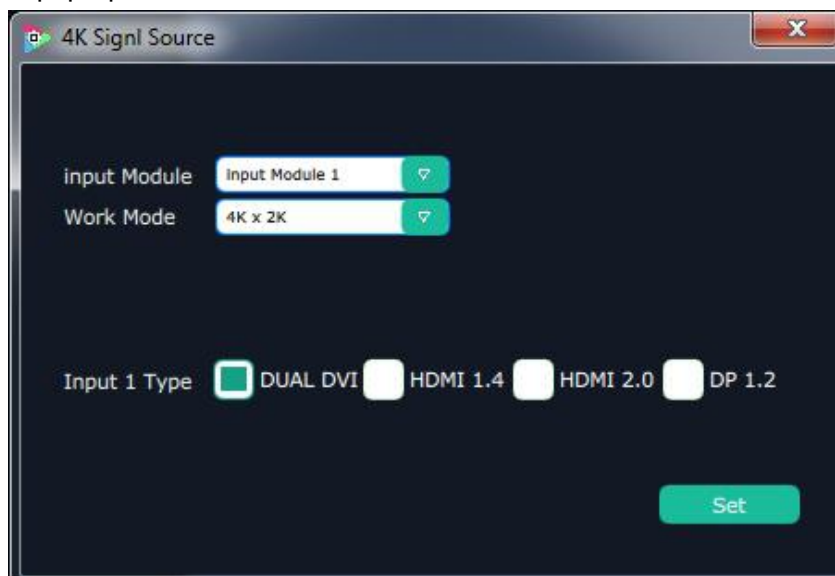
Reset: Select "Reset", the input property will be recover to factory setting.

Layer split/merge: Right click the input, select layer split/ layer merge.

Set 4K signal source: Right click the input, select "4K", and pop-up window as follows:



Click the "OK", and pop-up window as follows:



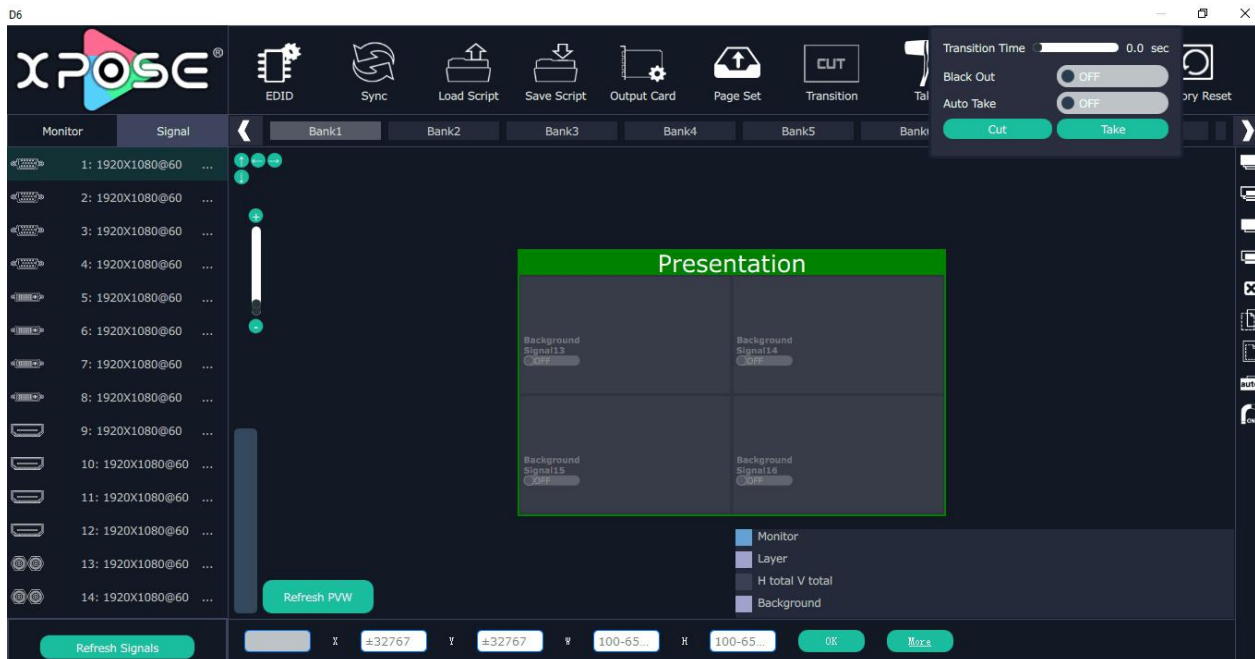
Choose "Input Module" and "Work Mode" and Input 1 Type, then click "Set"

Switch on Backups

In the Output Setting: sliding the switch to the left is Backups , and pop-up window as follows:

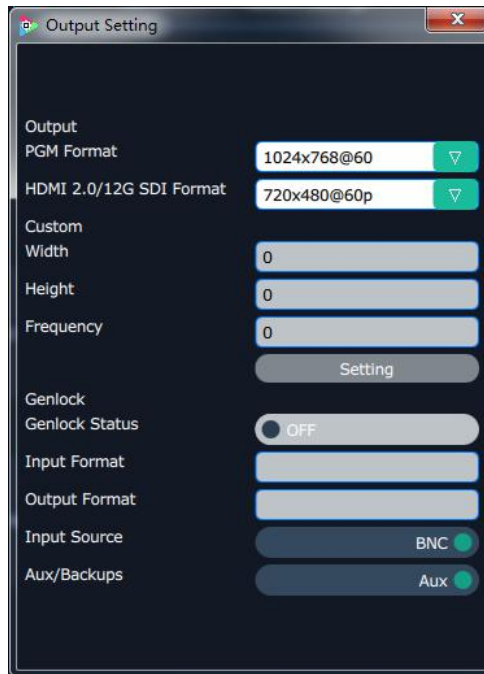


Click the "Operation Mode", and enter the interface as follows:

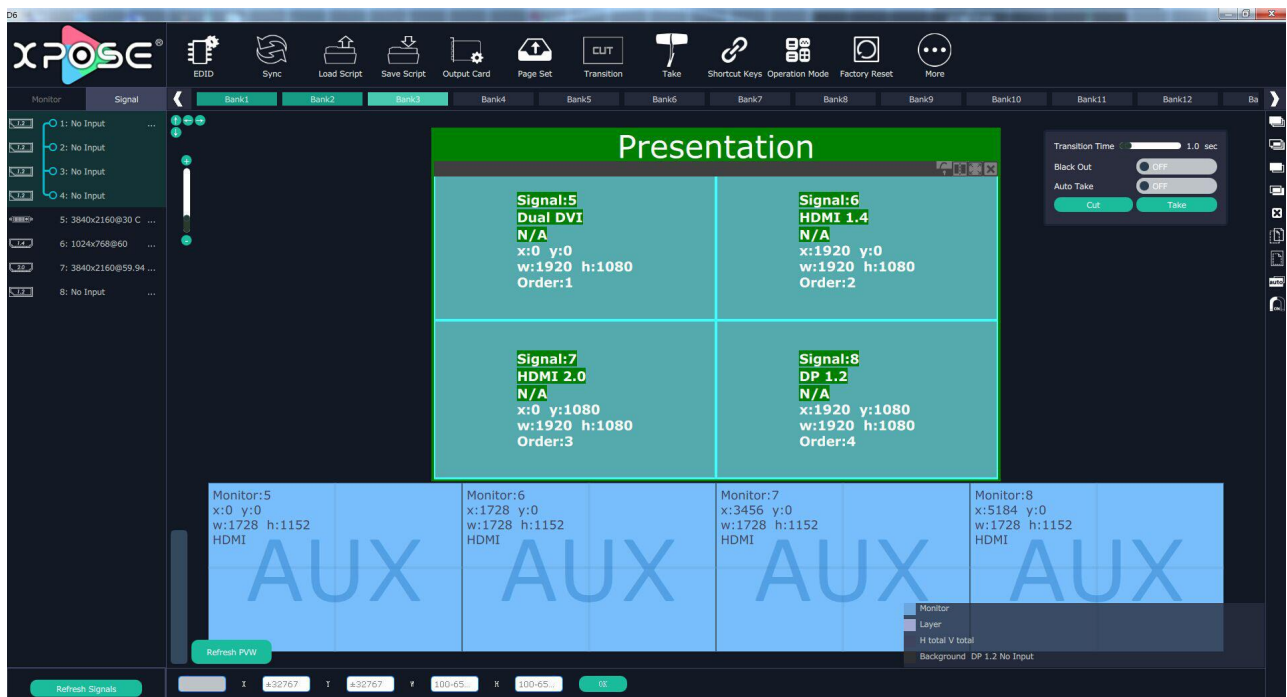


Switch on Aux

In the Output Setting: sliding the switch to the right is Aux, and pop-up window as follows:



Click the “Operation Mode”, and enter to the interface as follows:

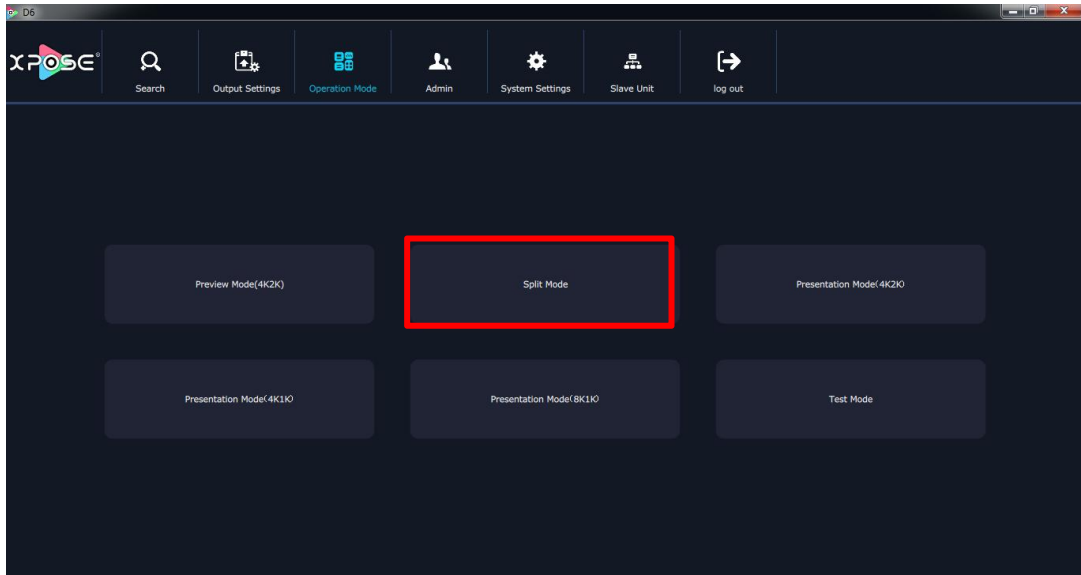


Note

Content on AUX is set only need once, all operation modes are the same AUX signal.

Split Mode

Click “Operation Mode” and Choose “Split Mode”



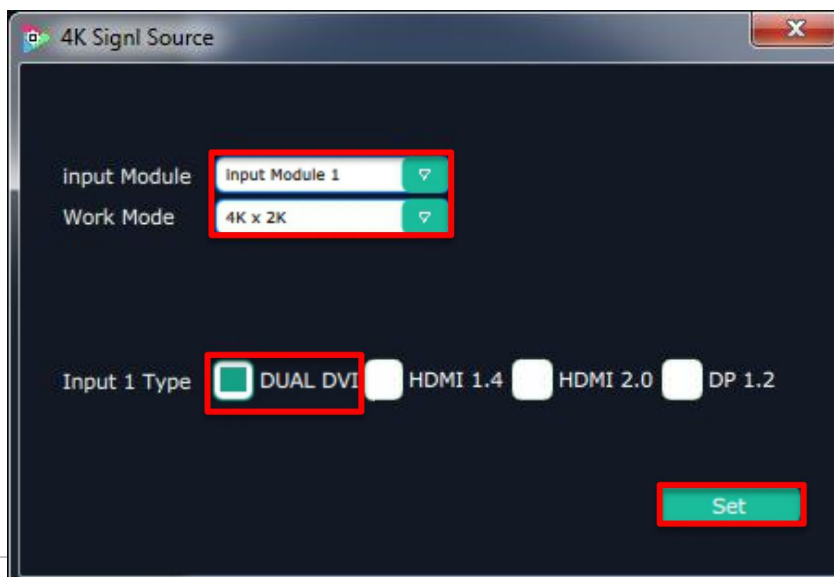
Click on signal shortcut, It displays the input module type, the quantity of inputs and input format. Right click the input for the following settings:

Change Name: Select “New Name”, and input the new name, click “OK” after setting.

Set Input Property: Right click the input and select “Input Property”.

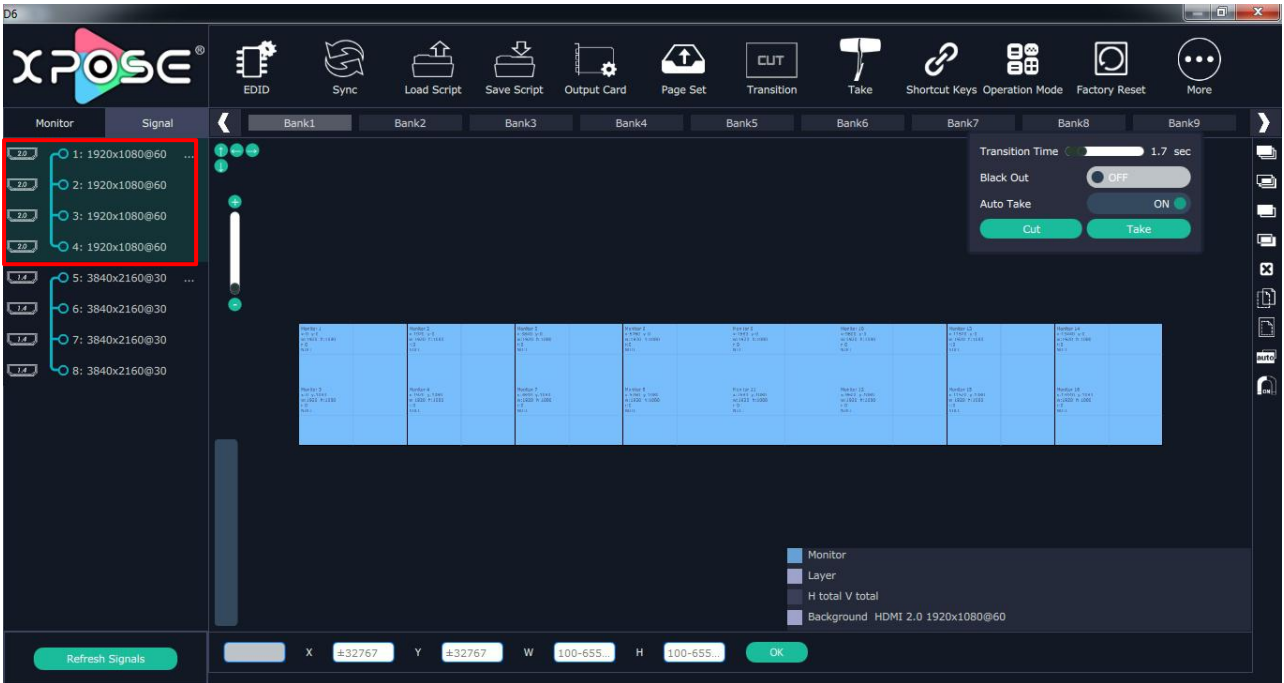
Layer split/merge: Right click the input, select layer split/ layer merge.

Set 4K signal source: Right click the input, select “4K”, Choose “Input Module” and “Work Mode” and Input 1 Type, then click “Set”.

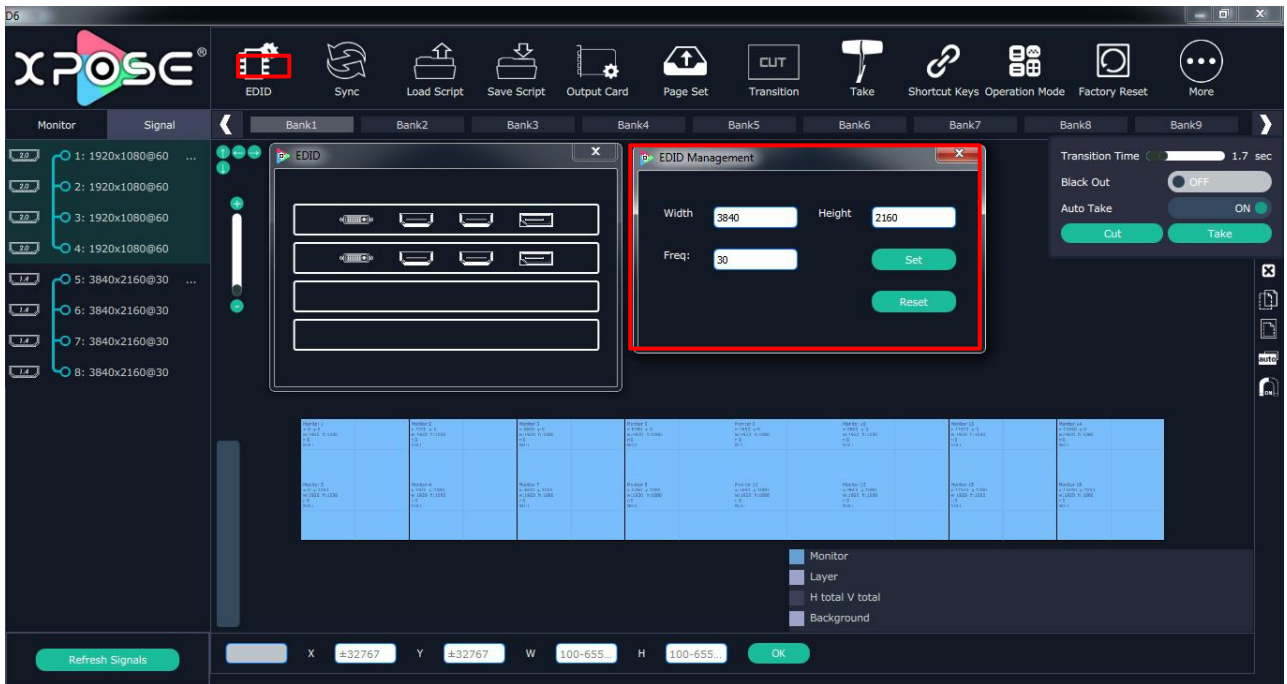


RGBlink®

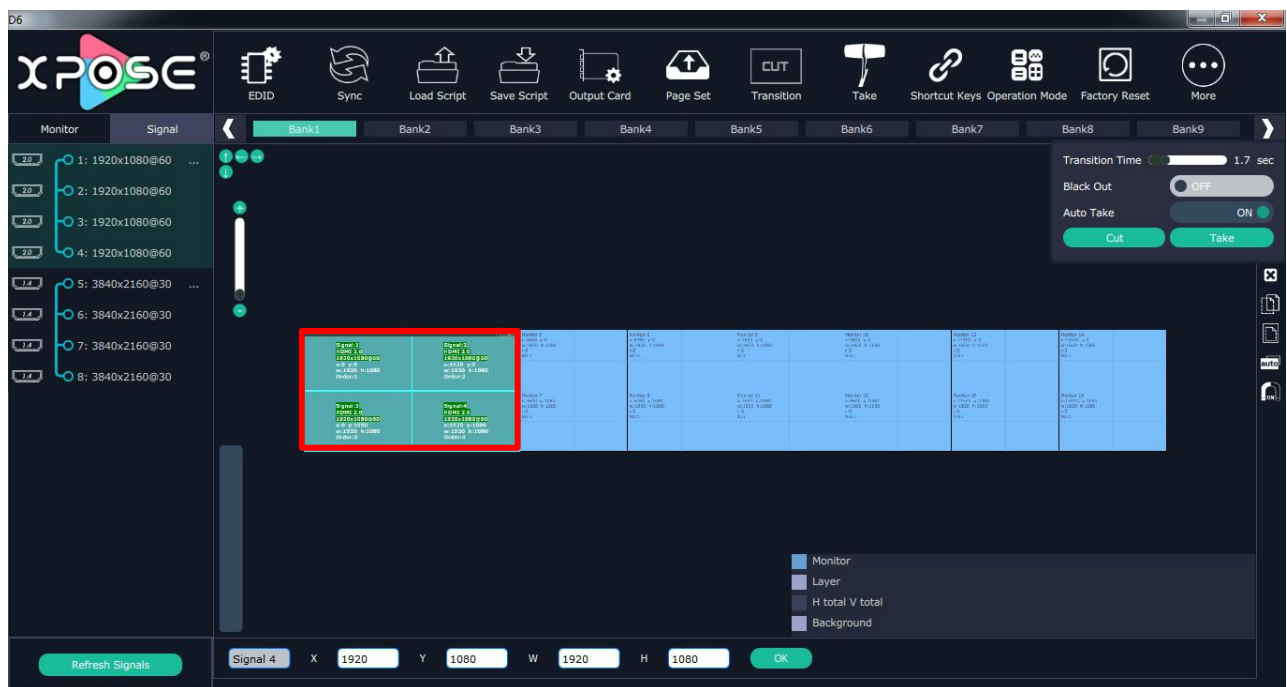
Refresh Signals: Right click the input and select “Refresh Signals”. If there is signal, it will show the input format, or it will show “No Input”.



Setting “EDID”



Capture Signal to Bank 1 as Modular 1,2,3

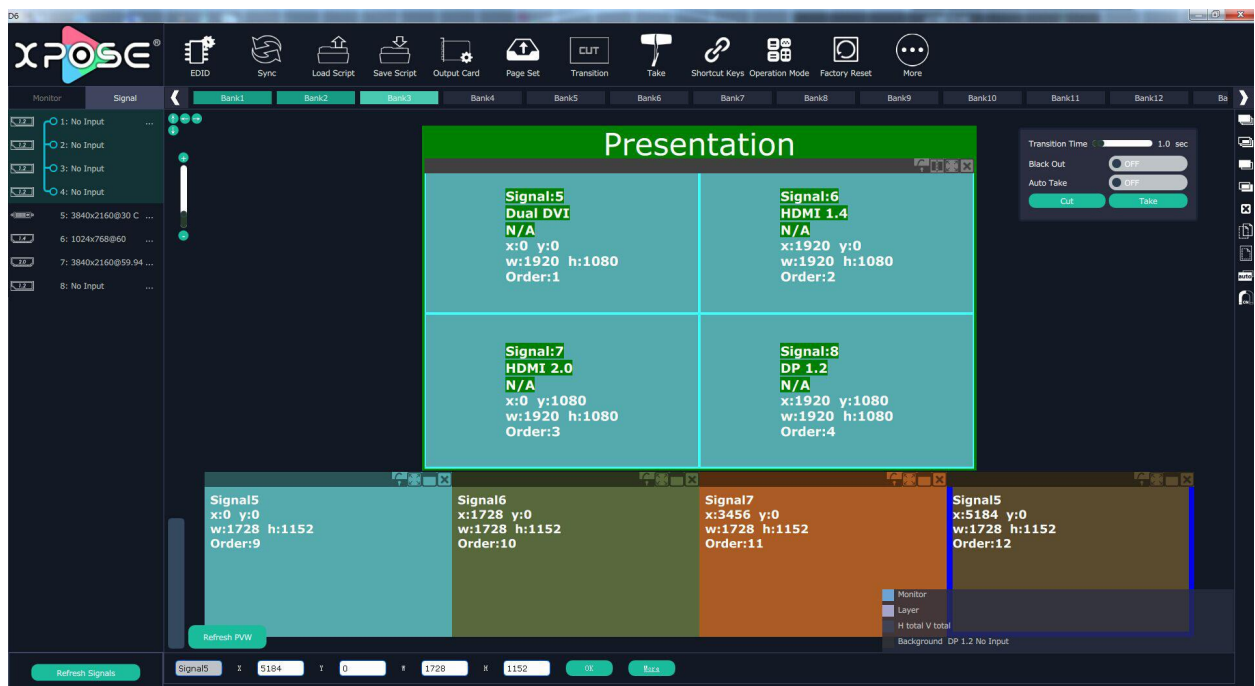
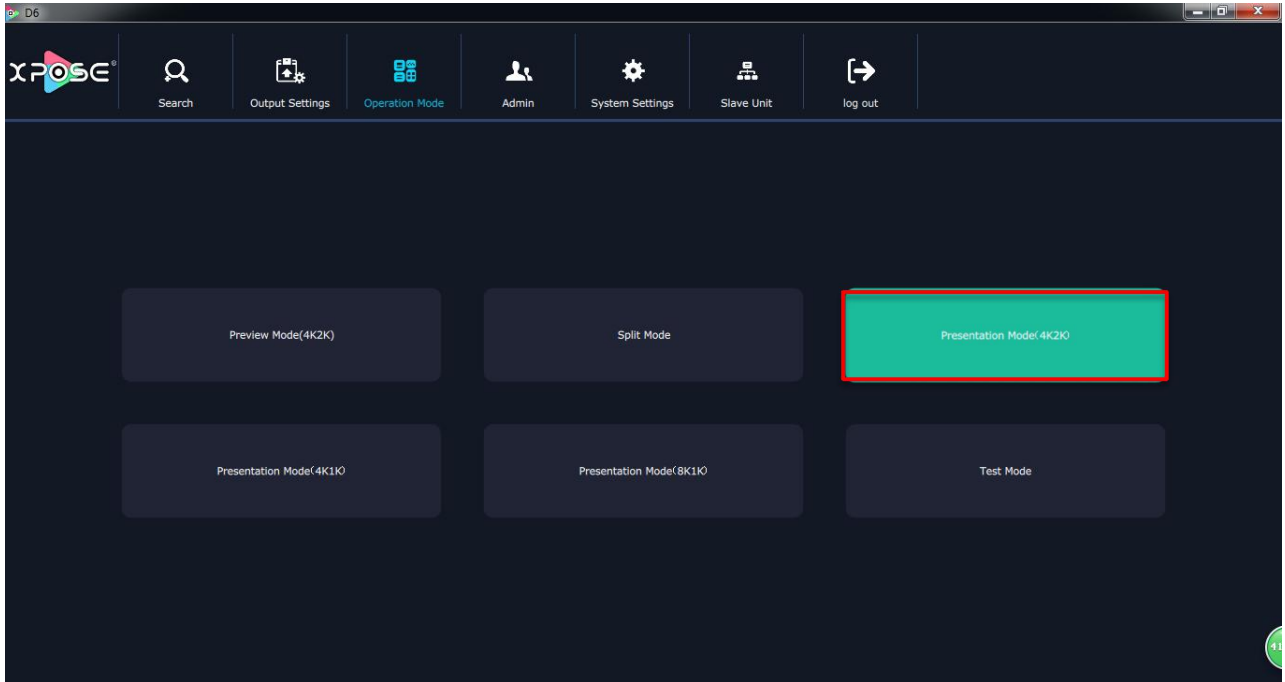


Reset: Select "Reset", the input property will be recover to factory setting.

Presentation Mode (4K2K)



Click "Operation Mode" and Choose "Presentation Mode (4K2K)"



Signal List

The signal list is shown as follows:



© Xiamen RGBlink Science & Technology Co., Ltd.

Ph: +86 592 5771197 | support@rgblink.com | www.rgblink.com



It displays the input module type, the quantity of inputs and input format. Right click the input for the following settings:

Change Name: Select “New Name”, and input the new name, click “OK” after setting.

Refresh Signals: Right click the input and select “Refresh Signals”. If there is signal, it will show the input format, or it will show “No Input”.

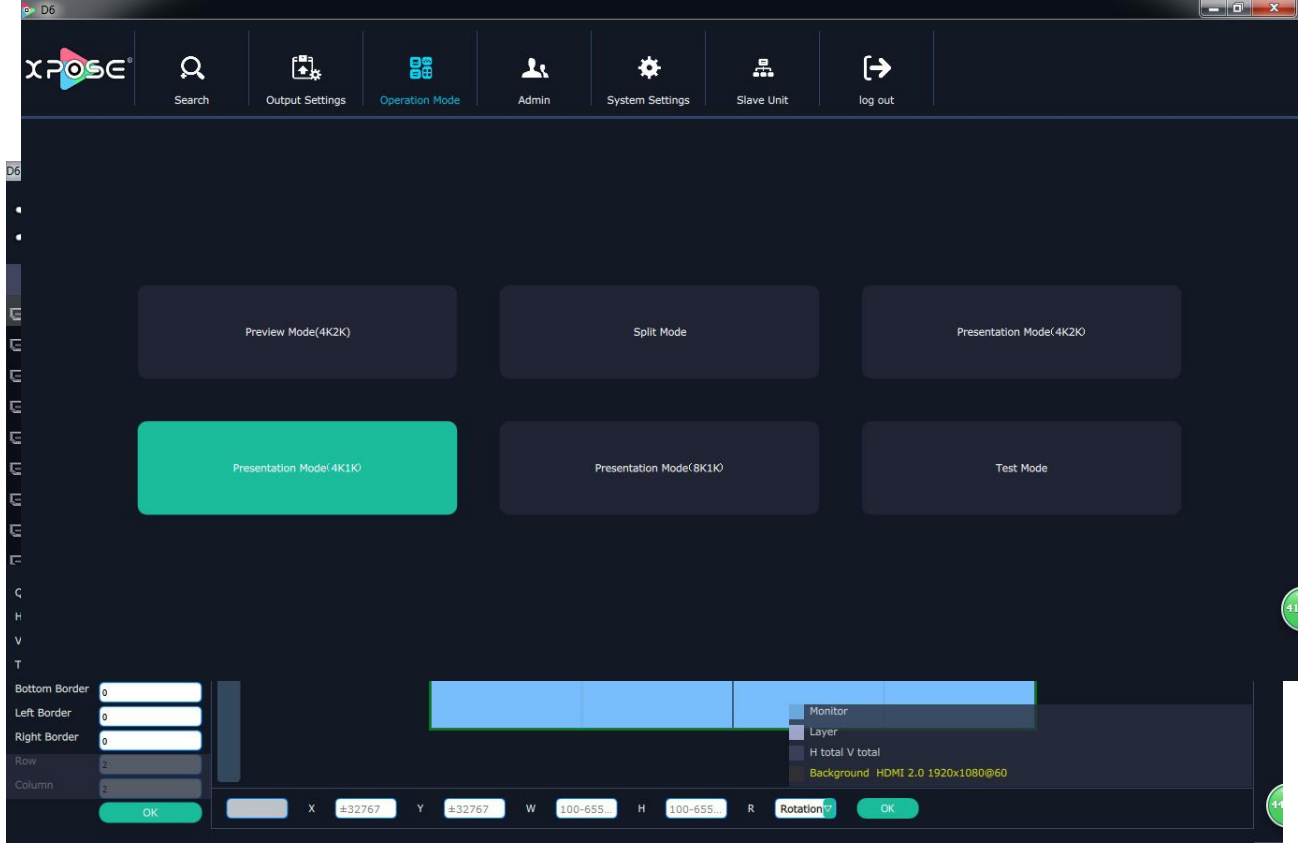
Set Input Property: Right click the input and select “Input Property”.

Set 4K signal source: Right click the input, select “4K”, Choose “Input Module” and “Work Mode” and Input 1 Type, then click “Set”.

Layer split/merge: Right click the input, select layer split/ layer merge.

Output Setting

Click “Monitor” shortcut , it will enter the interface as follows:

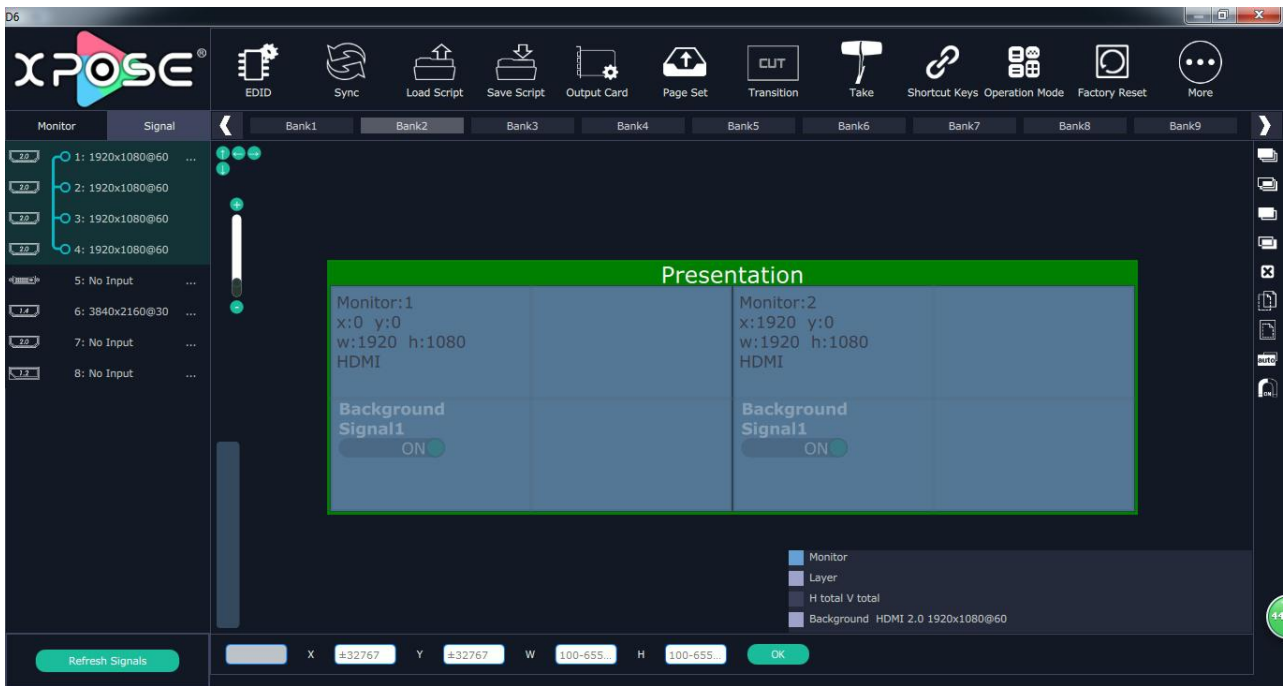


Quick split: Enable or disable the quick split mode by sliding the quick split switch and set H total, V total, Top Border, Bottom Border, Left Border, Right Border, Row and Column.

Presentation Mode(4K1K)

Click "Operation Mode" and Choose "Presentation Mode (4K1K)"





Signal List

The signal list is shown as follows:

Monitor	Signal
2.0	1: 1920x1080@60 ...
2.0	2: 1920x1080@60
2.0	3: 1920x1080@60
2.0	4: 1920x1080@60
	5: No Input ...
1.4	6: 3840x2160@30 ...
2.0	7: No Input ...
1.2	8: No Input ...

RGBlink[®]

© Xiamen RGBlink Science & Technology Co., Ltd.

Ph: +86 592 5771197 | support@rgblink.com | www.rgblink.com

It displays the input module type, the quantity of inputs and input format. Right click the input for the following settings:

Change Name: Select “New Name”, and input the new name, click “OK” after setting.


Refresh Signals: Right click the input and select “Refresh Signals”. If there is signal, it will show the input format, or it will show “No Input”.

Set Input Property: Right click the input and select “Input Property”.

Set 4K signal source: Right click the input, select “4K”, Choose “Input Module” and “Work Mode” and Input 1 Type, then click “Set”.

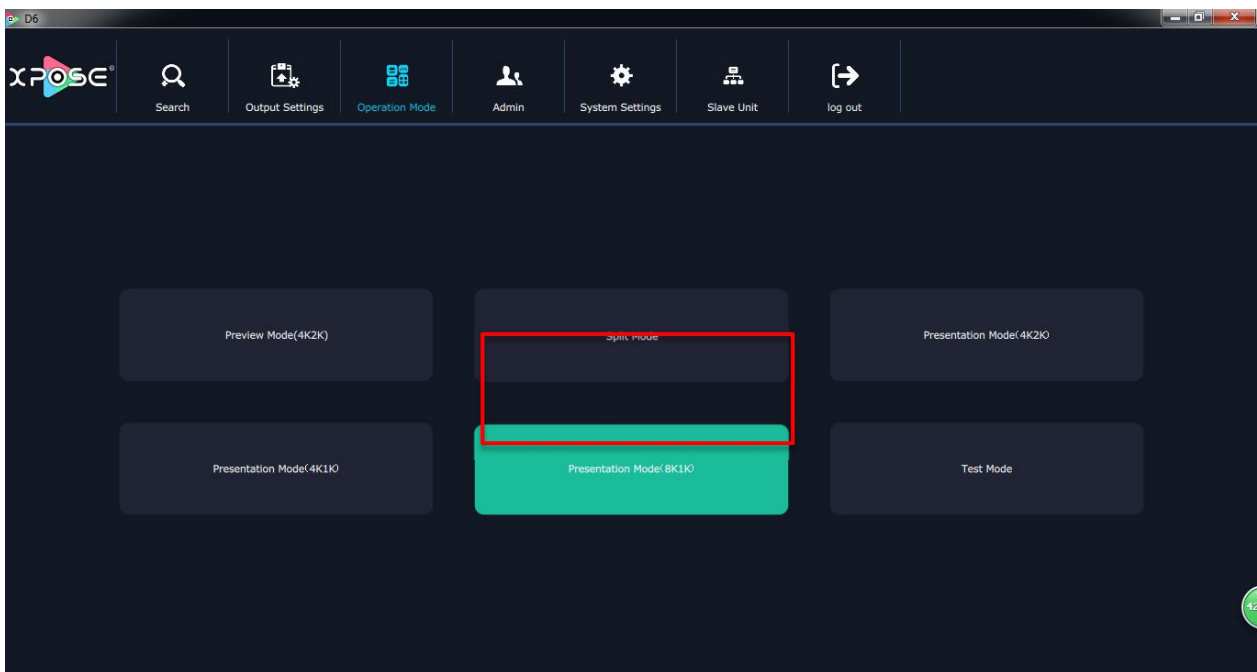
Layer split/merge: Right click the input, select layer split/ layer merge.

Output Setting

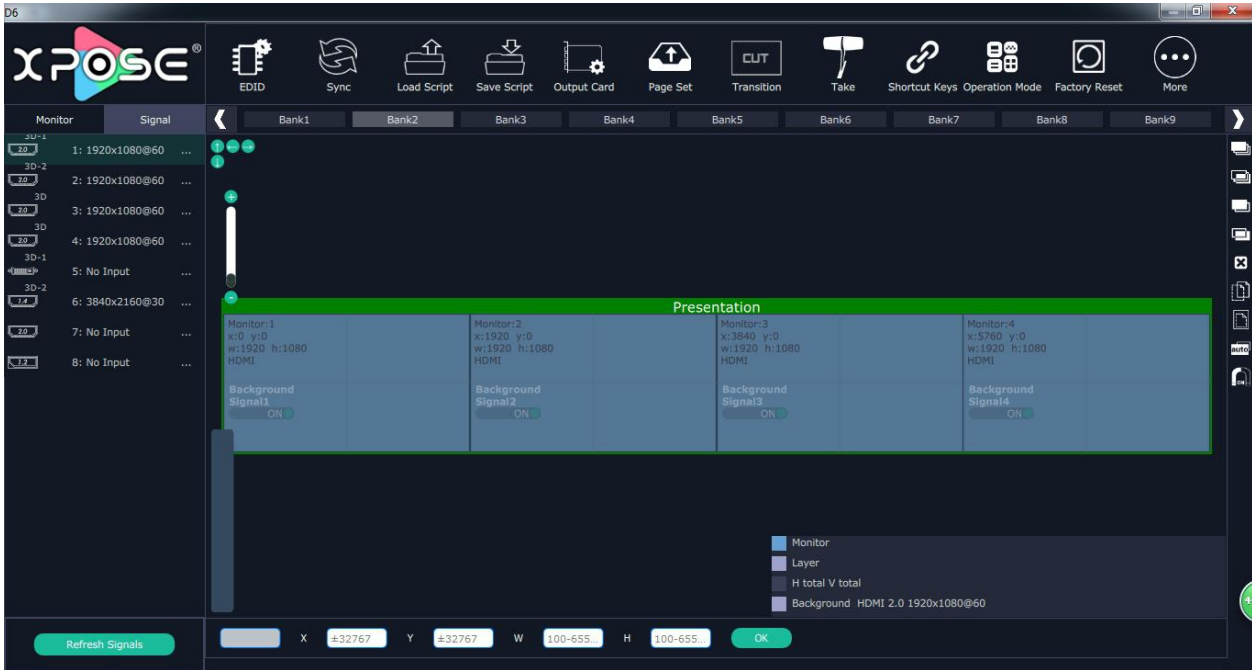
Click “Monitor” shortcut . Enable or disable the quick split mode by sliding the quick split switch and set H total, V total, Top Border, Bottom Border, Left Border, Right Border, Row and Column.

Presentation Mode (8K1K)

Click “Operation Mode” and Choose “Presentation Mode (8K1K)”



Enter the interface as below:



Signal List

The signal list is shown as follows:

Monitor	Signal
3D-1 2.0	1: 1920x1080@60 ...
3D-2 2.0	2: 1920x1080@60 ...
3D 2.0	3: 1920x1080@60 ...
3D 2.0	4: 1920x1080@60 ...
3D-1 2.0	5: No Input ...
3D-2 1.4	6: 3840x2160@30 ...
2.0	7: No Input ...
1.2	8: No Input ...



It displays the input module type, the quantity of inputs and input format. Right click the input for the following settings:

Change Name: Select “New Name”, and input the new name, click “OK” after setting.


Refresh Signals: Right click the input and select “Refresh Signals”. If there is signal, it will show the input format, or it will show “No Input”.

Set Input Property: Right click the input and select “Input Property”.

Set 4K signal source: Right click the input, select “4K”, Choose “Input Module” and “Work Mode” and Input 1 Type, then click “Set”.

Layer split/merge: Right click the input, select layer split/ layer merge.

Output Setting

Click “Monitor” shortcut . Enable or disable the quick split mode by sliding the quick split switch and set H total, V total, Top Border, Bottom Border, Left Border, Right Border, Row and Column.

Signal List

The signal list is shown as follows:



Monitor	Signal
	1: 1920x1080@60 ...
	2: 1920x1080@60
	3: 1920x1080@60
	4: 1920x1080@60
	5: No Input ...
	6: 3840x2160@30 ...
	7: No Input ...
	8: No Input ...

It displays the input module type, the quantity of inputs and input format. Right click the input for the following settings:

Change Name: Select “New Name”, and input the new name, click “OK” after setting.


Refresh Signals: Right click the input and select “Refresh Signals”. If there is signal, it will show the input format, or it will show “No Input”.

Set Input Property: Right click the input and select “Input Property”.

Set 4K signal source: Right click the input, select “4K”, Choose “Input Module” and “Work Mode” and Input 1 Type, then click “Set”.

Layer split/merge: Right click the input, select layer split/ layer merge.

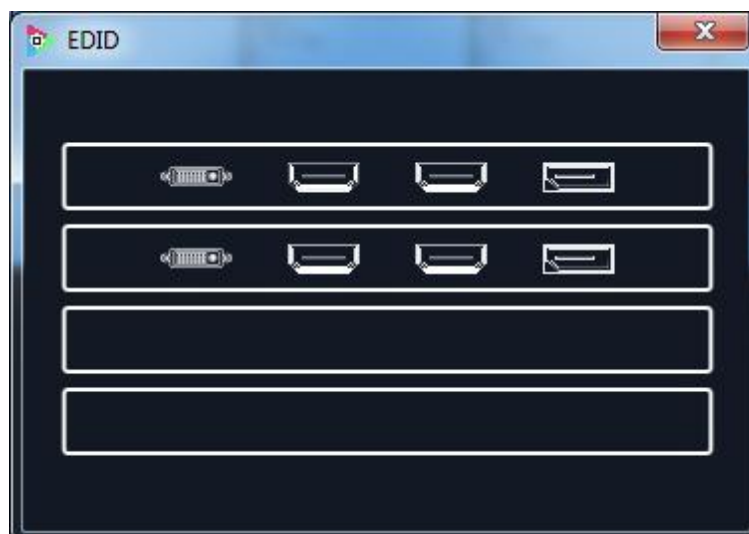
Output Setting

Click “Monitor” shortcut . Enable or disable the quick split mode by sliding the quick split switch and set H total, V total, Top Border, Bottom Border, Left Border, Right Border, Row and Column.

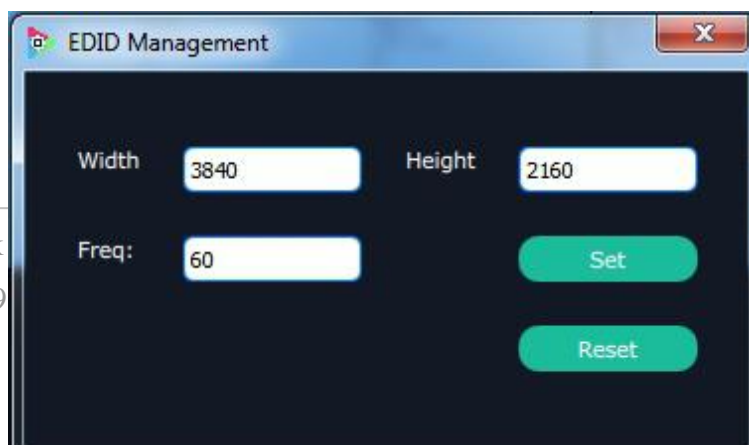
EDID



Click the EDID shortcut “”, and pop-up window as follows:



The special display project or LED display application would like to require special resolution settings to meet the requirement. Select the input or output board to read and write the EDID. As shown in the figure below:



Sync



Click the sync shortcut “Sync” to synchronize the current data.

Load Script



Click the load script shortcut “Load Script”, user can load the data from the computer.

Save Script



Click the save script shortcut “Save Script”, user can save the data to the computer.

Factory Reset

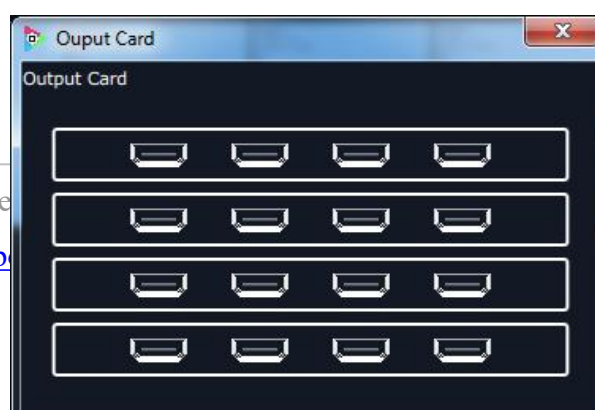


Click the factory reset shortcut “Factory Reset” to reset to factory settings.

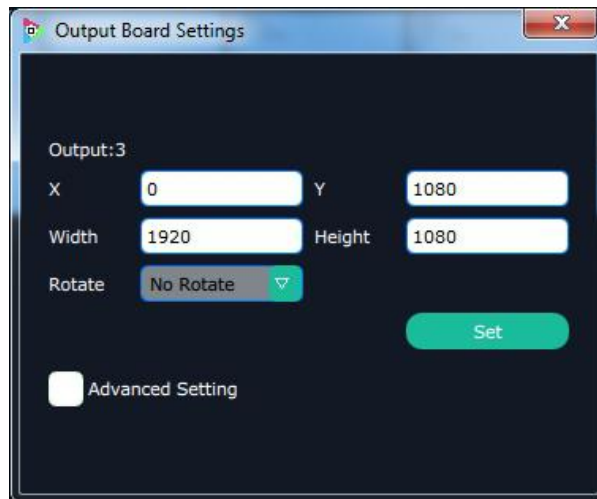
Output Card



Click the output card shortcut “Output Card”, and pop-up window as follows:

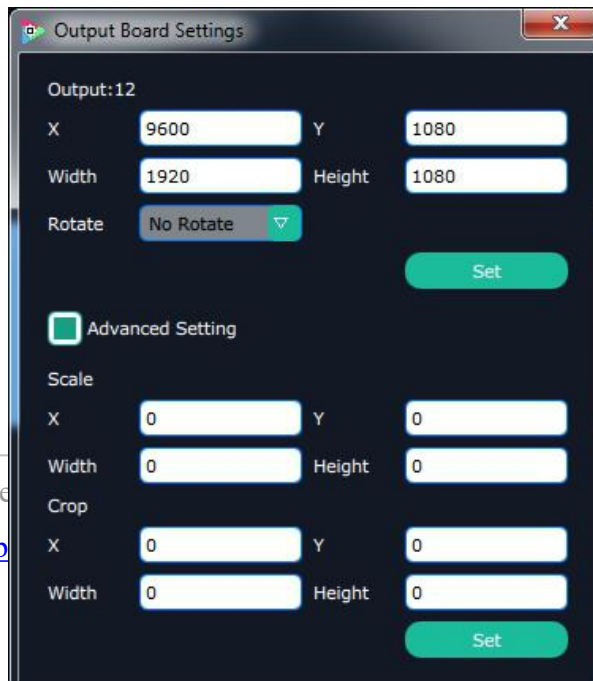


Click any output, and pop-up window as follows:



X, Y, width, height, rotate can be set.


If click "Advanced Setting", pop-up window as follow:



In advanced setting, scale and crop can be set. **Not recommended to use “Advanced Setting”.**

Page set



Click the page set shortcut “” to load and save 16 banks in one page.

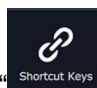
Transition

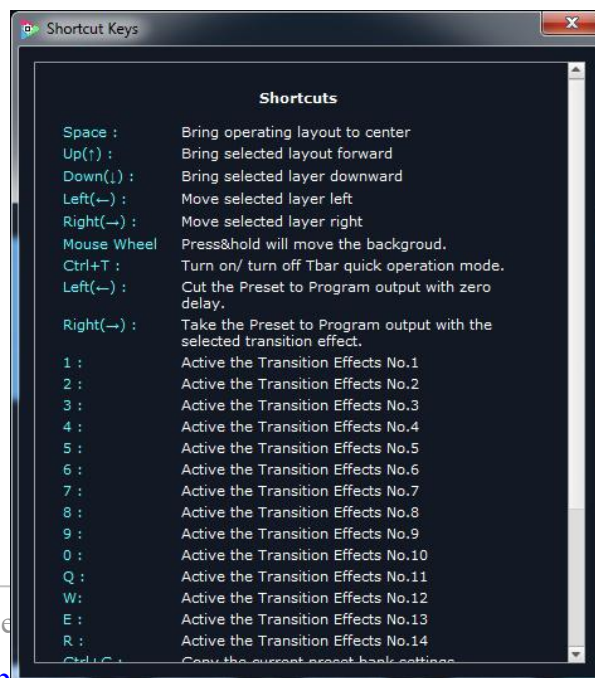


Click the page set shortcut “” to switch banks immediately.

Shortcut Keys



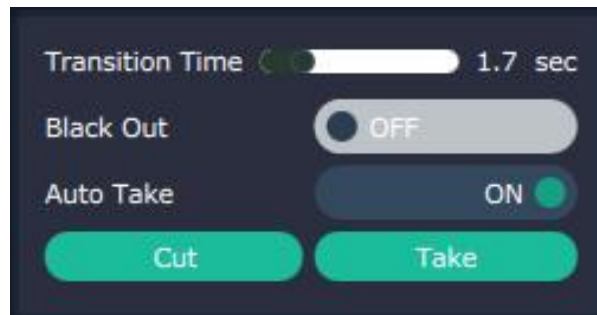
Click the shortcut “”, and pop-up window as follows:



Use shortcut keys to operate fast and easily.

Take

The take interface is shown as the figure below:



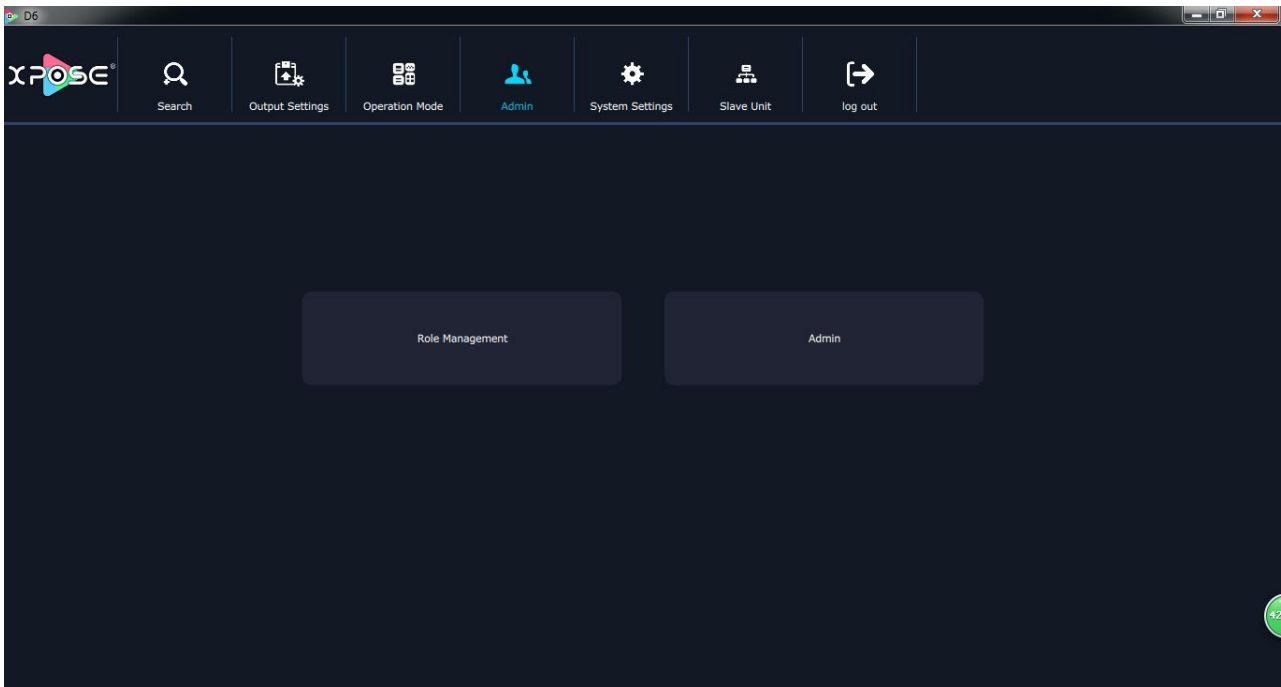
Set transition time, and the adjustment range is 0~10S.

Slide the black out switch to enable or disable the black function. Auto take on is the default state. If select black out and auto take on, the preview image will black or seamless switch to LED display instantaneously.

Click “Cut” or “Take”, the preview will be cut or seamless switch to LED display.

Admin

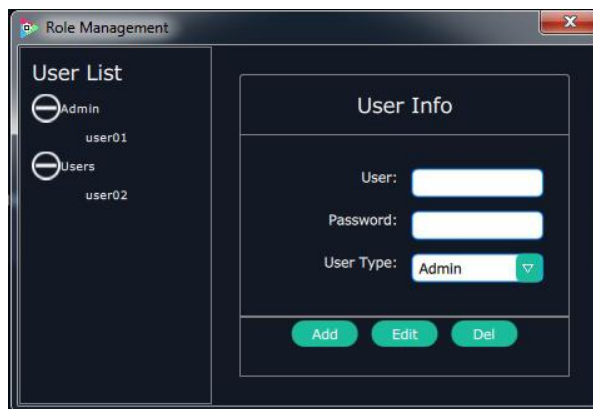
Click the “Admin”, and enter the interface as follows:



Role management and rights management are included in access control, specific as follows:

Role Management

Click the “Role Management”, and pop-up window as follows:



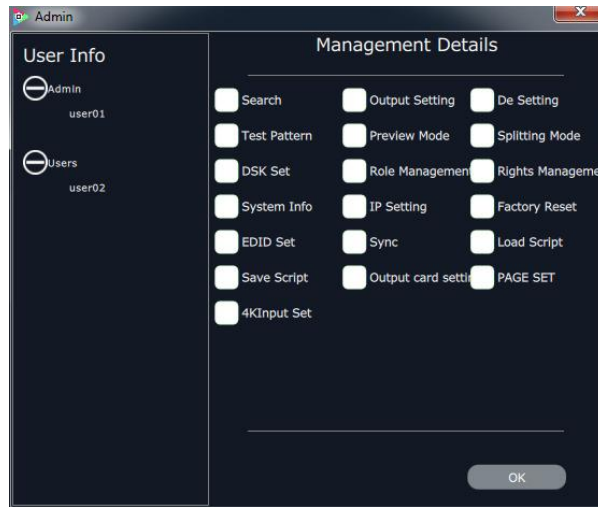
Add: Input the user name and password, and select the user type as “Admin’ or “Users”, click “**Add**” after setting.

Edit: Select the admin or users in user’s list, then edit the password or user type, click “**Edit**” after setting.

Del: Select the admin or users in user's list, then click "**Del**", the selected user will be deleted. **Rights**

Management

Click the "Rights Management", and pop-up window as follows:



Select the admin or users in user's list, then click the rights in "Managements Detail". Click "**OK**" after setting. User can operate the rights that selected.

User Info: Display all the Admin or Users list, double click it will unfold or fold the list.

Management Details:

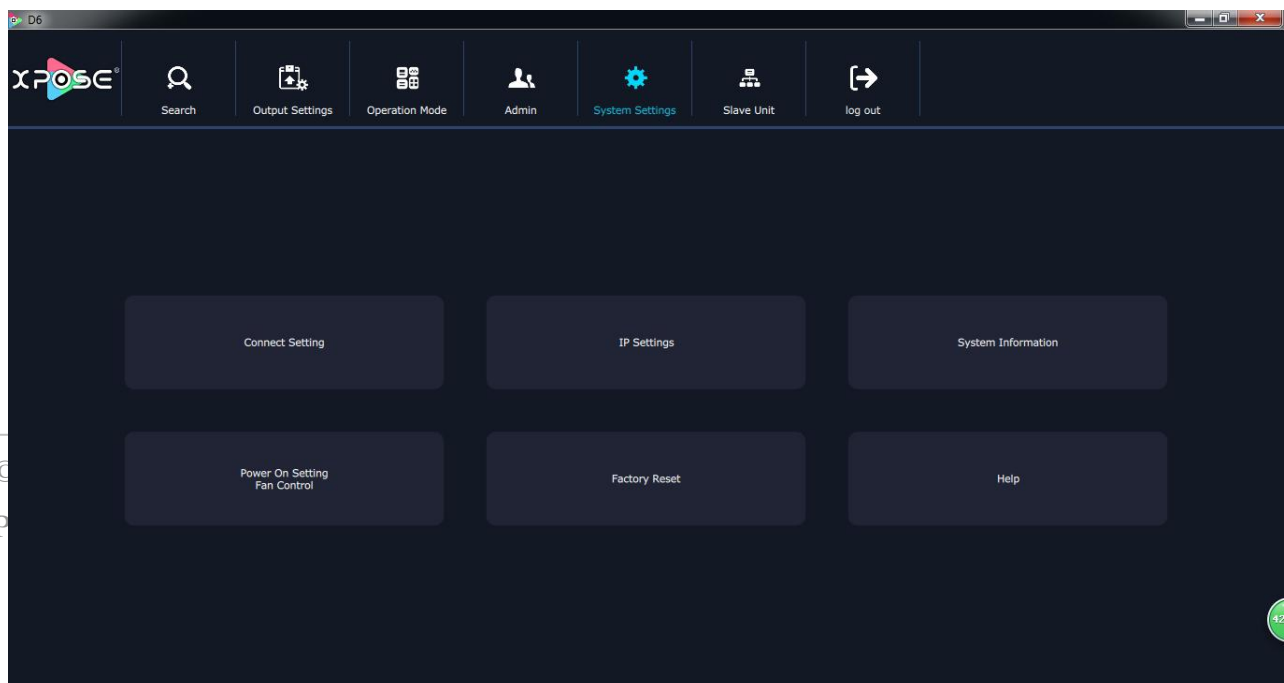
The admin can manage all the admin users and users user.

Admin users can manage all the users user, except the admin users.

Users can not mange all the users, including admin user and users user.

System Settings

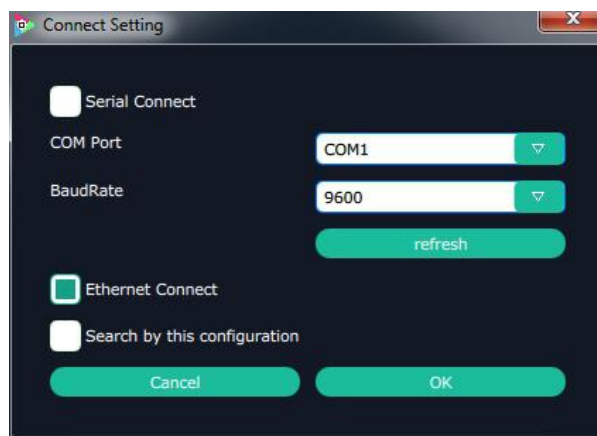
Click the "System Settings", and enter the interface as follows:



Connect Setting, IP Settings, System information, Power On Setting/ Fan control, Factory Reset, and help are included in System Settings, specific as follows:

Connect Settings

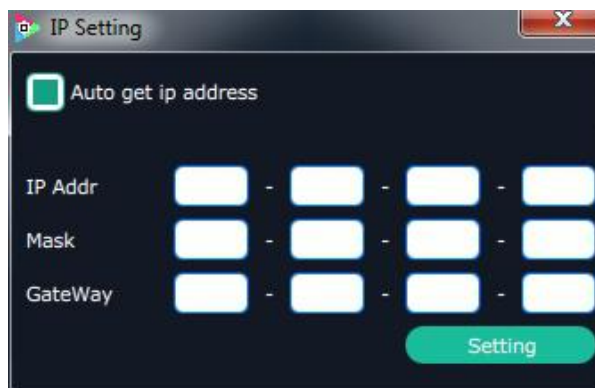
Click the “Connect Setting”, and pop-up window as follows:



Setting the D6 with XPOSE connecting ways: Serial Connect, Net Connect and Search by this configuration.

IP Settings

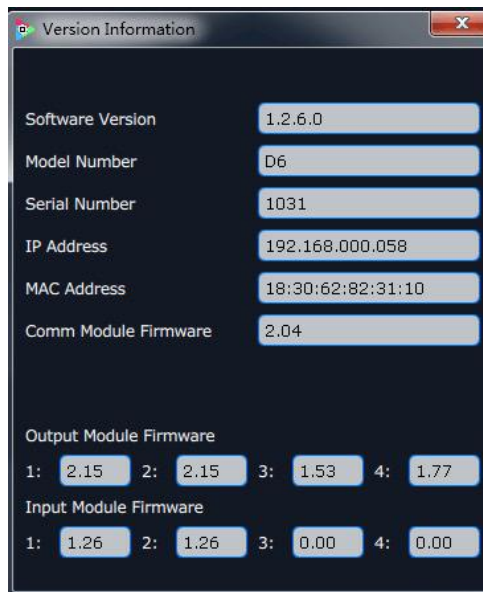
Click the “IP Settings”, and pop-up window as follows:



Default “Auto get ip address”. Users can also set IP address, mask and gateway manually. This is usually used if one computer control some devices or remote control. It takes effect after reboot the XPOSE if change IP through network.

System Information

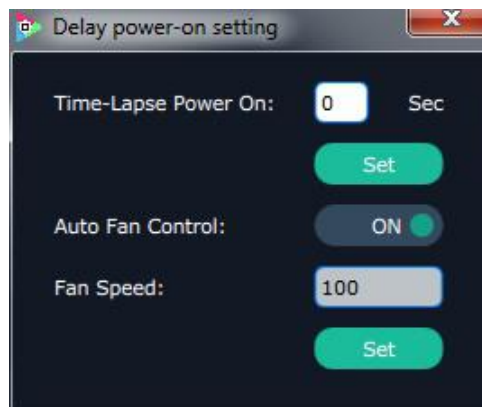
Click the “System Information”, and pop-up window as follows:



Display the D6 version information. Including Model Number, Serial Number, IP Address, firmware version, etc.

Power on setting Fan Control

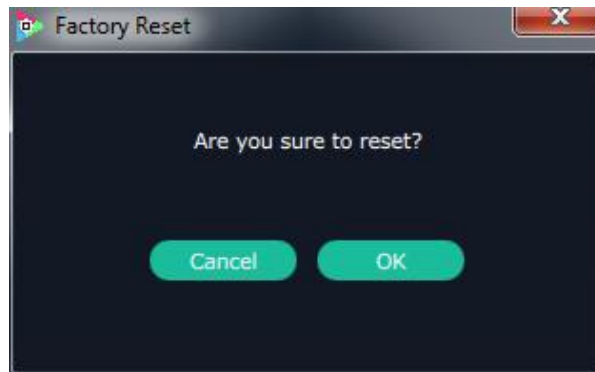
Click the “Power On Setting Fan Control”, and pop-up window as follows:



Set the time-lapse recall time, Enable or disable the Auto Fan Control, set Fan Speed and click "Set", that will load.

Factory Reset

Click the "Factory Reset", and pop-up window as follows:



Click "OK", return to factory resetting.



Click "OK", and Restart.



Contact Information

Warranty:

All video products are designed and tested to the highest quality standard and backed by a full 3 years parts and labor warranty. Warranties are effective upon delivery date to customer and are non-transferable. RGBlink warranties are only valid to the original purchase/owner. Warranty related repairs include parts and labor, but do not include faults resulting from user negligence, special modification, lighting strikes, abuse(drop/crush), and/or other unusual damages.

The customer shall pay shipping charges when unit is returned for repair.

Headquarter: S601~608 Weiye Building Torch Hi-Tech Industrial Development Zone Xiamen, Fujian Province, P.R.C

- **Tel:** +86-592-5771197
- **Fax:** +86-592-5788216
- **Customer Hotline:** 4008-592-315
- **Web:**
 - ~ <http://www.rgblink.com>
 - ~ <http://www.rgblink.cn>
- **E-mail:** support@rgblink.com

